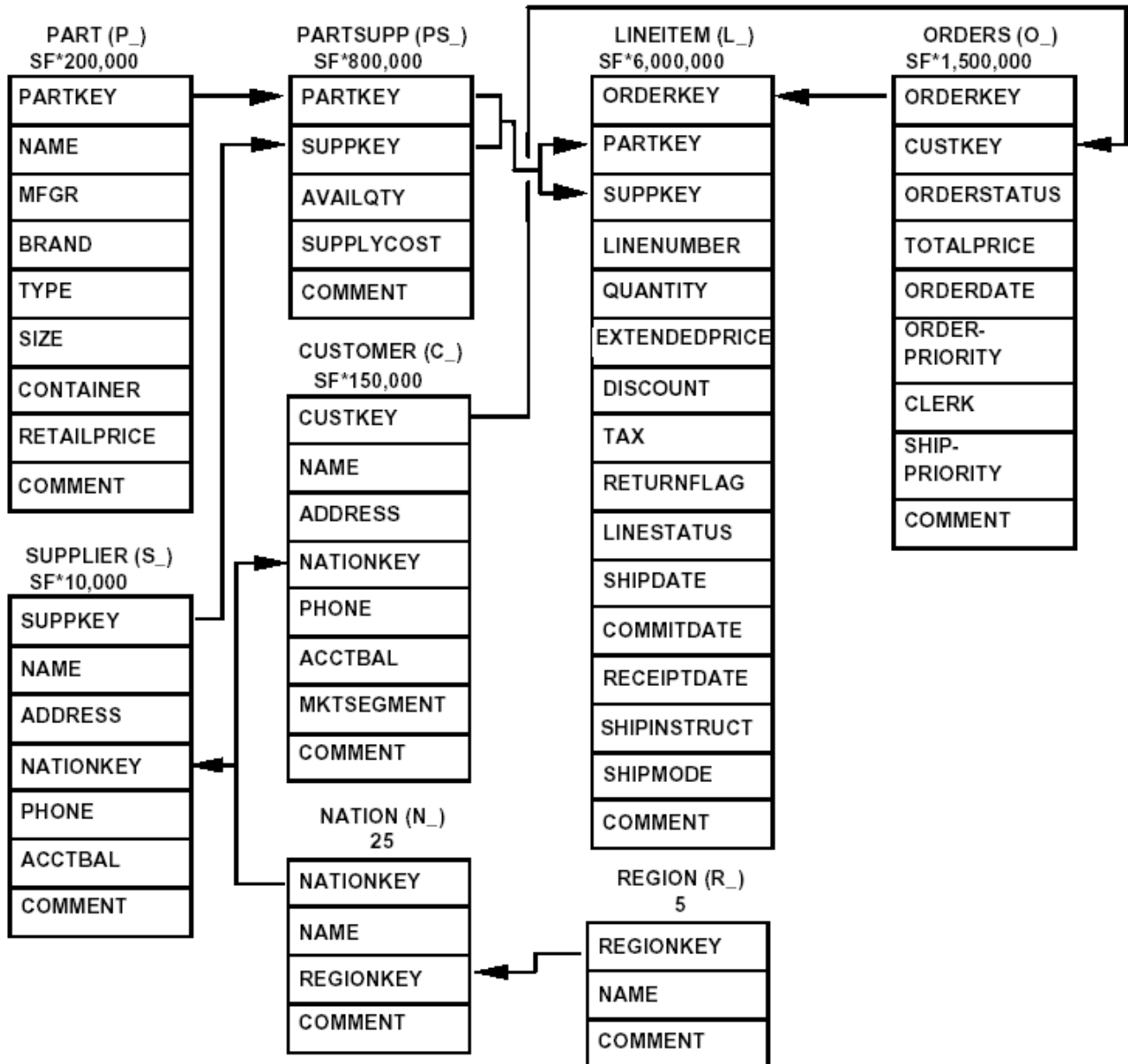


Relational Algebra: Aggregation

Database Schema



Legend:

- The parentheses following each table name contain the prefix of the column names for that table;
- The arrows point in the direction of the one-to-many relationships between tables;
- The number/formula below each table name represents the cardinality (number of rows) of the table. Some are factored by SF, the Scale Factor, to obtain the chosen database size. The cardinality for the LINEITEM table is approximate (see Clause 4.2.5).

Problems

1. Find the 10 most expensive orders that contained at least 200 items.
Note: Take into consideration each LineItem's quantity field.
2. Find the 5 largest volumes (\$-wise) shipped between any two countries.
3. Find the percentage of customers from each nation.