

000  
001  
002  
003  
004  
005  
006  
007  
008  
009  
010  
011  
012  
013  
014  
015  
016  
017  
018  
019  
020  
021  
022  
023  
024  
025  
026  
027  
028  
029  
030  
031  
032  
033  
034  
035  
036  
037  
038  
039  
040  
041  
042  
043  
044  
045  
046  
047  
048  
049  
050  
051  
052  
053

---

# Supplementary Material

## Multimodal Learning with Deep Boltzmann Machines

---

Anonymous Author(s)  
Affiliation  
Address  
email

### 1 Examples of Text Generated by the DBM model

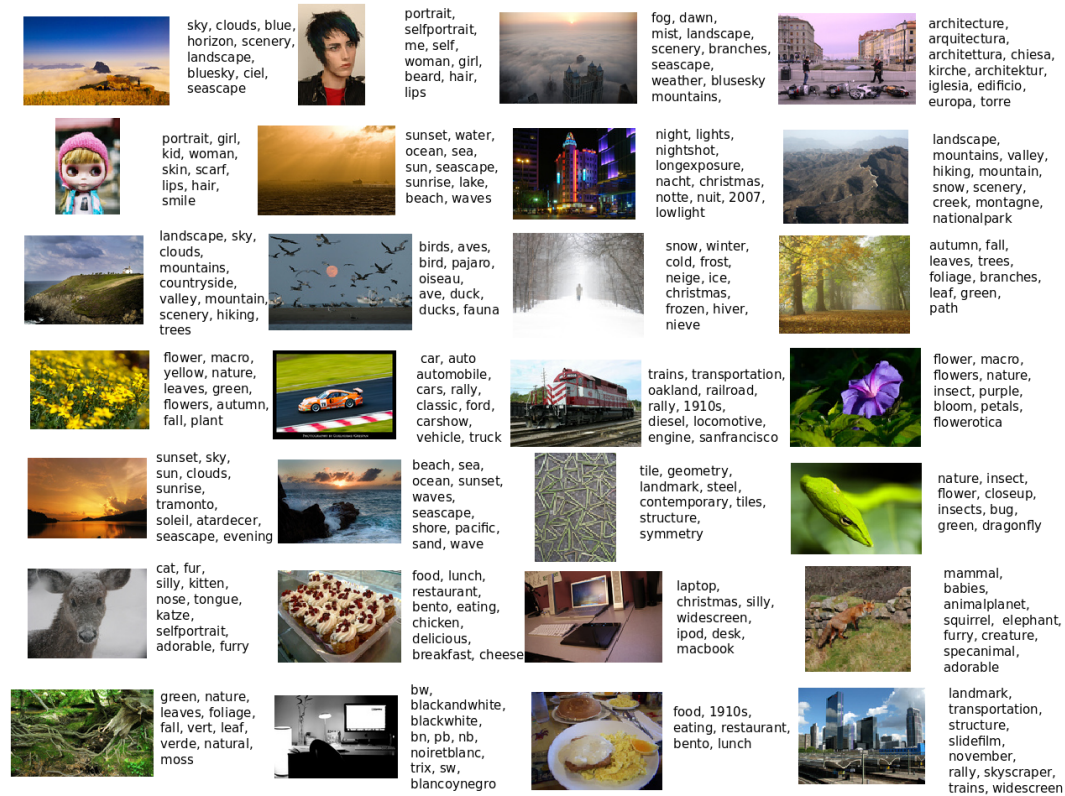


Figure 1: Examples of text generated from images by the DBM model

### 2 Topic-wise classification results

The classification task considered in this paper involves classifying inputs into topics. There are 38 topics and each input may belong to several topics. In order to make our results comparable to previous results, we do one-vs-all classification for each topic separately. Table 1 reports class-wise average precision scores for the models described in the paper with multimodal inputs.

Table 2 reports class-wise average precision scores for the models with unimodal inputs.

054  
055  
056  
057  
058  
059  
060  
061  
062  
063  
064  
065  
066  
067  
068  
069  
070  
071  
072  
073  
074  
075  
076  
077  
078  
079  
080  
081  
082  
083  
084  
085  
086  
087  
088  
089  
090  
091  
092  
093  
094  
095  
096  
097  
098  
099  
100  
101  
102  
103  
104  
105  
106  
107

Table 1: Comparison of Average Precision scores of different models on the MIR Flickr Dataset with multimodal inputs.

LABELS	ANIMALS	BABY	BABY*	BIRD	BIRD*	CAR	CAR*	CLOUDS	CLOUDS*	DOG
RANDOM	0.129	0.010	0.005	0.030	0.019	0.047	0.015	0.148	0.054	0.027
LDA	0.537	<b>0.285</b>	<b>0.308</b>	0.426	0.500	0.297	0.389	0.651	0.528	<b>0.621</b>
SVM	0.531	0.200	0.165	0.443	0.520	0.339	0.434	0.695	0.434	0.607
DBM-LABELLED	0.511	0.139	0.145	0.190	0.253	0.319	0.368	0.768	0.723	0.351
DBM-UNLABELLED	0.630	0.107	0.069	0.454	0.522	0.318	0.437	0.735	0.679	0.588
AUTOENCODER	0.602	0.156	0.121	<b>0.461</b>	0.547	0.366	<b>0.526</b>	0.735	0.684	0.605
DBN	0.625	0.115	0.128	0.382	0.459	0.341	0.486	0.772	0.739	0.457
DBM	<b>0.641</b>	0.130	0.111	0.426	<b>0.588</b>	<b>0.414</b>	0.500	<b>0.799</b>	<b>0.748</b>	0.603
LABELS	DOG*	FEMALE	FEMALE*	FLOWER	FLOWER*	FOOD	INDOOR	LAKE	MALE	MALE*
RANDOM	0.024	0.247	0.159	0.073	0.043	0.040	0.333	0.032	0.243	0.146
LDA	<b>0.663</b>	0.494	0.454	0.560	0.623	0.439	0.663	0.258	0.434	0.354
SVM	0.641	0.465	0.451	0.480	0.717	0.308	0.683	0.207	0.413	0.335
DBM-LABELLED	0.385	0.535	0.493	0.604	0.668	0.462	0.759	0.277	0.505	0.424
DBM-UNLABELLED	0.618	0.569	0.527	0.657	0.736	0.483	<b>0.764</b>	0.277	0.484	0.408
AUTOENCODER	0.642	0.557	0.542	0.613	0.723	0.558	0.730	0.271	0.491	0.388
DBN	0.515	0.588	0.564	0.643	0.765	0.491	0.754	0.281	<b>0.522</b>	<b>0.436</b>
DBM	0.662	<b>0.619</b>	<b>0.595</b>	<b>0.671</b>	<b>0.798</b>	<b>0.575</b>	0.764	<b>0.314</b>	0.522	0.422
LABELS	NIGHT	NIGHT*	PEOPLE	PEOPLE*	PLANT_LIFE	PORTRAIT	PORTRAIT*	RIVER	RIVER*	SEA
RANDOM	0.108	0.027	0.415	0.314	0.351	0.157	0.153	0.036	0.006	0.053
LDA	0.615	0.420	0.731	0.664	0.703	0.543	0.541	0.317	<b>0.134</b>	0.477
SVM	0.588	0.450	0.748	0.565	0.691	0.480	0.558	0.158	0.109	0.529
DBM-LABELLED	0.666	0.505	0.802	0.742	0.794	0.651	0.665	0.274	0.110	0.582
DBM-UNLABELLED	0.684	0.473	0.843	0.783	0.796	0.644	0.640	0.260	0.071	0.611
AUTOENCODER	0.657	0.464	0.791	0.742	0.769	0.655	0.656	0.240	0.016	0.608
DBN	<b>0.698</b>	0.567	0.837	0.788	0.823	0.691	0.690	<b>0.351</b>	0.103	0.647
DBM	0.687	<b>0.585</b>	<b>0.848</b>	<b>0.805</b>	<b>0.832</b>	<b>0.713</b>	<b>0.695</b>	0.312	0.107	<b>0.684</b>
LABELS	SEA*	SKY	STRUCTURES	SUNSET	TRANSPORT	TREE	TREE*	WATER	MEAN	
RANDOM	0.009	0.316	0.400	0.085	0.116	0.187	0.027	0.133	0.124	
LDA	0.197	0.800	0.709	0.528	0.411	0.515	0.342	0.575	0.492	
SVM	0.201	0.823	0.695	0.613	0.369	0.559	0.321	0.527	0.475	
DBM-LABELLED	0.260	0.883	0.796	0.659	0.423	0.668	0.492	0.628	0.513	
DBM-UNLABELLED	0.259	0.875	0.808	0.662	0.426	0.607	0.518	0.696	0.545	
AUTOENCODER	0.357	0.836	0.761	0.625	0.460	0.641	0.513	0.683	0.547	
DBN	<b>0.359</b>	<b>0.888</b>	0.811	<b>0.679</b>	0.464	<b>0.679</b>	<b>0.539</b>	0.703	0.563	
DBM	0.358	0.886	<b>0.819</b>	0.678	<b>0.495</b>	0.667	0.533	<b>0.719</b>	<b>0.587</b>	

Table 2: Comparison of Average Precision scores of different models with unimodal inputs from the MIR Flickr Dataset.

LABELS	ANIMALS	BABY	BABY*	BIRD	BIRD*	CAR	CAR*	CLOUDS	CLOUDS*	DOG
IMAGE-SVM	0.278	0.084	0.088	0.128	0.129	0.179	0.227	0.651	0.511	0.155
IMAGE-DBN	0.348	<b>0.343</b>	<b>0.245</b>	<b>0.424</b>	0.384	<b>0.486</b>	0.407	0.601	0.403	0.106
IMAGE-DBM	0.407	0.078	0.094	0.064	0.077	0.234	0.227	0.723	0.648	0.486
DBM-ZeroTEXT	<b>0.546</b>	0.096	0.099	0.369	<b>0.440</b>	0.284	<b>0.439</b>	0.675	0.618	<b>0.533</b>
DBM-GenTEXT	0.546	0.135	0.106	0.210	0.243	0.302	0.388	<b>0.761</b>	<b>0.681</b>	0.334
LABELS	DOG*	FEMALE	FEMALE*	FLOWER	FLOWER*	FOOD	INDOOR	LAKE	MALE	MALE*
IMAGE-SVM	0.156	0.461	0.389	0.469	0.519	0.293	0.605	0.188	0.407	0.294
IMAGE-DBN	0.301	0.351	<b>0.625</b>	0.595	0.590	0.364	0.617	0.225	0.470	0.334
IMAGE-DBM	0.525	0.514	0.485	0.432	0.502	0.300	0.688	0.249	0.461	0.394
DBM-ZeroTEXT	<b>0.574</b>	0.500	0.476	0.545	0.651	<b>0.478</b>	0.661	0.237	0.432	0.377
DBM-GenTEXT	0.354	<b>0.595</b>	0.552	<b>0.600</b>	<b>0.697</b>	0.478	<b>0.757</b>	<b>0.257</b>	<b>0.530</b>	<b>0.444</b>
LABELS	NIGHT	NIGHT*	PEOPLE	PEOPLE*	PLANT_LIFE	PORTRAIT	PORTRAIT*	RIVER	RIVER*	SEA
IMAGE-SVM	0.554	0.390	0.631	0.558	0.687	0.493	0.493	0.179	0.102	0.366
IMAGE-DBN	0.337	0.240	0.420	0.389	0.481	0.415	0.609	<b>0.372</b>	<b>0.116</b>	0.318
IMAGE-DBM	0.563	0.462	0.752	0.693	0.713	0.604	0.598	0.223	0.106	0.549
DBM-ZeroTEXT	0.585	<b>0.493</b>	0.714	0.669	0.708	0.584	0.573	0.250	0.091	0.578
DBM-GenTEXT	<b>0.659</b>	0.459	<b>0.830</b>	<b>0.777</b>	<b>0.800</b>	<b>0.662</b>	<b>0.658</b>	0.208	0.085	<b>0.630</b>
LABELS	SEA*	SKY	STRUCTURES	SUNSET	TRANSPORT	TREE	TREE*	WATER	MEAN	
IMAGE-SVM	0.126	0.775	0.626	0.588	0.298	0.514	0.205	0.448	0.375	
IMAGE-DBN	<b>0.363</b>	0.622	0.586	0.579	0.352	0.600	0.218	0.457	0.413	
IMAGE-DBM	0.282	0.827	0.721	0.562	0.363	0.630	0.424	0.505	0.452	
DBM-ZeroTEXT	0.277	0.738	0.685	0.590	0.413	0.571	<b>0.475</b>	0.600	0.490	
DBM-GenTEXT	0.254	<b>0.875</b>	<b>0.795</b>	<b>0.671</b>	<b>0.437</b>	<b>0.639</b>	0.465	<b>0.623</b>	<b>0.513</b>	