

Top-Quality Planning: Finding Practically Useful Sets of Best Plans

Michael Katz and Shirin Sohrabi and Octavian Udrea

IBM T.J. Watson Research Center

1101 Kitchawan Rd, Yorktown Heights, NY 10598, USA

Abstract

The need for finding a set of plans rather than one has been motivated by a variety of planning applications. The problem is studied in the context of both diverse and top-k planning: while diverse planning focuses on the difference between pairs of plans, the focus of top-k planning is on the quality of each individual plan. Recent work in diverse planning introduced additional restrictions on solution quality. Naturally, there are application domains where diversity plays the major role and domains where quality is the predominant feature. In both cases, however, the amount of produced plans is often an artificial constraint, and therefore the actual number has little meaning.

Inspired by the recent work in diverse planning, we propose a new family of computational problems called *top-quality* planning, where solution validity is defined through plan quality bound rather than an arbitrary number of plans. Switching to bounding plan quality allows us to implicitly represent sets of plans. In particular, it makes it possible to represent sets of plans that correspond to valid plan reorderings with a single plan. We formally define the *unordered* top-quality planning computational problem and present the first planner for that problem. We empirically demonstrate the superior performance of our approach compared to a top-k planner-based baseline, ranging from 41% increase in coverage for finding all optimal plans to 69% increase in coverage for finding all plans of quality up to 120% of optimal plan cost. Finally, complementing the new approach by a complete procedure for generating all valid reorderings of a given plan, we derive a top-quality planner. We show the planner to be competitive with a top-k planner based baseline.

1 Introduction

While the main focus in classical planning was on producing a single plan, a variety of applications has shown the need for finding a set of plans rather than one. These applications include malware detection (Boddy et al. 2005), plan recognition as planning and its applications (Riabov et al. 2015; Sohrabi, Riabov, and Udrea 2016; Sohrabi et al. 2018; Shvo, Sohrabi, and McIlraith 2018), human team planning (Kim et al. 2018), explainable AI (Chakraborti et al. 2018), re-planning and plan monitoring (Fox et al. 2006).

Copyright © 2020, Association for the Advancement of Artificial Intelligence (www.aaai.org). All rights reserved.

The problem of finding a set of plans is studied in the context of both diverse planning (e.g., Nguyen et al. 2012) and top-k planning (e.g., Katz et al. 2018). Diverse planning focuses on difference between plans, evaluating a set of plans by aggregating over the pairwise differences between plans in the set. Recent work in diverse planning introduced additional restrictions on solution quality, requiring each plan in the set to also be of bounded cost (Vadlamudi and Kambhampati 2016; Katz and Sohrabi 2020). Top-k planning is a generalization of cost-optimal planning. The focus of top-k planning is on the cost of each plan, guaranteeing that no plan of better cost exists outside the solution set.

Naturally, in some application domains diversity plays the major role, while in other quality is the predominant feature. The latter include plan recognition (Sohrabi, Riabov, and Udrea 2016), multi-agent plan recognition (Shvo, Sohrabi, and McIlraith 2018), human team planning (Kim et al. 2018), and explainable AI (Chakraborti et al. 2018). These applications exploit top-k planners to derive a large number of plans. In these domains, though, the focus on the number of plans provided is somewhat artificial, and is intended solely to ensure that a sufficient number of plans is found. Further, ordering of actions in a plan can be of less importance in some applications. Plan recognition is one such example application. In plan recognition as planning (Sohrabi, Riabov, and Udrea 2016; Shvo, Sohrabi, and McIlraith 2018), a planning task consists of actions that explain/discard observations. There is no meaning to the order among these actions. Some specific practical applications for plan recognition are hypothesis generation (Sohrabi et al. 2016) and scenario planning advisor (Sohrabi et al. 2018). These applications use a top-k planner with a large bound on the number of required plans k , and the obtained plans are post-processed to discard reorderings and cluster similar plans. This would also apply to e.g., problems with actions that correspond to information gathering, where no particular ordering is required. One clear disadvantage of a top-k planner in such cases is that it would generate all possible valid orderings before proceeding to plans of a higher cost. Thus, the number of required plans used in practice is often a crude over-approximation. Further, even quite large numbers are often not sufficient to ensure that the set of plans includes

2 Preliminaries

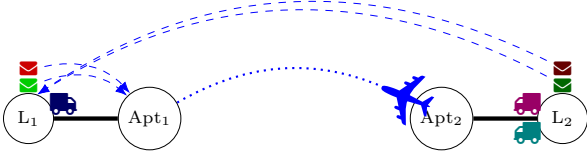


Figure 1: Example logistics task.

enough plans of interest, since plans can easily have millions of valid reorderings. A top-k planner would have to generate all these plans before it can get to a plan of a higher cost. Diverse planners (Bryce 2014; Nguyen et al. 2012; Coman and Muñoz-Avila 2011; Roberts, Howe, and Ray 2014; Vadlamudi and Kambhampati 2016) tackle the issue by defining diversity criteria over a set of plans, but only a handful of works take the plan quality into consideration (Roberts, Howe, and Ray 2014; Vadlamudi and Kambhampati 2016; Katz and Sohrabi 2020). While some computational problems in diverse planning do require to provide some guarantees on solution quality (e.g., Katz and Sohrabi 2020), existing diverse planners still do not provide such guarantees.

In this paper, we propose a new family of computational problems called *top-quality planning*. The objective of top-quality planning is to find and concisely represent a set of all plans of bounded quality, for a given (absolute) bound, generalizing the cost-bounded classical planning problem (Stern, Puzis, and Felner 2011; Thayer and Ruml 2011; Haslum 2013). That is, we suggest an alternative definition of solution validity, by bounding the solution quality instead of bounding the number of plans. This allows us to define an *equivalence* relation on plans and implicitly represent equivalence classes of plans without knowing the exact number of plans in each class. In particular, in this work, we focus on the equivalence relation that is defined by all valid reorderings of each plan, represented by one *canonical* plan. Furthermore, we propose a first planner for *unordered* top-quality planning that iteratively finds a single plan of top quality and forbids at once all plans found so far, including all their valid reorderings. For that, we adapt a recently proposed diverse planning reformulation that forbids a single multiset of actions (Katz and Sohrabi 2020) to forbid exactly a collection of multisets. Our adaptation of the existing reformulation allows us to forbid multiple sets of plans at each iteration while preserving soundness and completeness of our approach. We empirically compare our approach to unordered top-quality planning to the only available baseline – a top-k planner with a large k bound. Our approach exhibits a superior performance, ranging from 41% increase in coverage for finding all optimal plans to 69% increase in coverage for finding all plans of cost up to 120% of optimal plan cost. Finally, note that, given a complete procedure for producing all valid reorderings of a plan, our approach can be used to construct either a top-quality planner, producing all plans of quality under the given bound, or a top-k planner, depending on the stopping criteria. The empirical comparison shows that such a planner favorably competes with the baseline, based on an existing iterative top-k planner.

We consider classical planning tasks in the well-known SAS⁺ formalism (Bäckström and Nebel 1995), extended with action costs. Such *planning tasks* $\Pi = \langle \mathcal{V}, \mathcal{O}, s_0, s_* \rangle$ consist of \mathcal{V} , a finite set of finite-domain *state variables*, \mathcal{O} , a finite set of *actions*, s_0 , an *initial state*, and s_* , the *goal*. Each variable $v \in \mathcal{V}$ is associated with a finite domain $dom(v)$ of variable values. These variable and value pairs are called *facts*. A *partial assignment* p maps a subset of variables $vars(p) \subseteq \mathcal{V}$ to values in their domains. For a variable $v \in \mathcal{V}$ and partial assignment p , the value of v in p is denoted by $p[v]$ if $v \in vars(p)$ and we say $p[v]$ is *undefined* if $v \notin vars(p)$. A partial assignment s with $vars(s) = \mathcal{V}$, is called a *state*. State s is *consistent* with partial assignment p if they agree on all variables in $vars(p)$, shortly denoted by $p \subseteq s$. The product $\mathcal{S} = \prod_{v \in \mathcal{V}} dom(v)$ is called the *state space* of planning task Π . s_0 is a state and s_* is a partial assignment. A state s is called a *goal state* if $s_* \subseteq s$ and the set of all goal states is denoted by \mathcal{S}_{s_*} . Each action o in \mathcal{O} is a pair $\langle pre(o), eff(o) \rangle$ where $pre(o)$ is a partial assignment called *precondition* and $eff(o)$ is a partial assignment called *effect*. Further, o has an associated natural number $cost(o)$, called *cost*. An action o is applicable in state s if $pre(o) \subseteq s$. Applying action o in state s results in a state denoted by $s[o]$ where $s[o][v] = eff(o)[v]$ for all $v \in vars(eff)$ and $s[o][v] = s[v]$ for all other variables. An action sequence $\pi = \langle o_1, \dots, o_n \rangle$ is applicable in state s if there are states s_0, \dots, s_n such that o_i is applicable in s_{i-1} and $s_{i-1}[o_i] = s_i$ for $0 \leq i \leq n$. We denote s_n by $s[\pi]$. For convenience we often write o_1, \dots, o_n instead of $\langle o_1, \dots, o_n \rangle$. An action sequence with $s_0[\pi] \in \mathcal{S}_{s_*}$ is called a *plan*. The cost of a plan π , denoted by $cost(\pi)$ is the summed cost of the actions in the plan. For a planning task $\Pi = \langle \mathcal{V}, \mathcal{O}, s_0, s_* \rangle$, the set of all plans is denoted by \mathcal{P}_Π . A plan π is *optimal* if its cost is minimal among all plans in \mathcal{P}_Π . For a plan π , we denote by $MS(\pi)$ the multiset¹ of actions in π . Note that two different plans π and π' can have $MS(\pi) = MS(\pi')$. We call such plans *reordering* of each other. Reorderings of actions of a plan that are plans are called *valid reorderings*.

In this paper, we use a logistics task, depicted in Figure 1, as our running example. This task has two cities, with two locations each (L_i and Apt_i), three trucks, T_1 (left), and T_2, T_3 (right), that can drive within their cities, one airplane, A , that can fly between the airport locations (Apt_1 and Apt_2), and four packages, P_1 to P_4 , that need to be transported from their initial locations to some specified goal locations. The initial and goal locations of all objects are shown in Figure 1 and marked with dashed arrows. Assuming all actions are unit cost, a cost-optimal plan for this task consists of 20 actions. Example plans π_a, π_b , and π_c are depicted in Figure 2.

Given a plan π , it is sometimes possible to obtain a different plan of equivalent cost without solving the planning task again. Two of such ways: action reordering and deriving symmetric plans, are exploited by state-of-the-art top-k planners (Katz et al. 2018). While action reordering is performed using search and may be time consuming, symmetric

¹A set with possible multiple occurrences of the same element.

(load P ₄ T ₂ L ₂)	(load P ₃ T ₂ L ₂)	(load P ₄ T ₃ L ₂)
(load P ₃ T ₂ L ₂)	(load P ₄ T ₂ L ₂)	(load P ₃ T ₃ L ₂)
(drive T ₂ L ₂ Apt ₂)	(drive T ₂ L ₂ Apt ₂)	(drive T ₃ L ₂ Apt ₂)
(unload P ₄ T ₂ Apt ₂)	(unload P ₄ T ₂ Apt ₂)	(unload P ₄ T ₃ Apt ₂)
(unload P ₃ T ₂ Apt ₂)	(unload P ₃ T ₂ Apt ₂)	(unload P ₃ T ₃ Apt ₂)
(load P ₂ T ₁ L ₁)	(load P ₂ T ₁ L ₁)	(load P ₂ T ₁ L ₁)
(load P ₁ T ₁ L ₁)	(load P ₁ T ₁ L ₁)	(load P ₁ T ₁ L ₁)
(load P ₃ A Apt ₂)	(load P ₃ A Apt ₂)	(load P ₃ A Apt ₂)
(load P ₄ A Apt ₂)	(load P ₄ A Apt ₂)	(load P ₄ A Apt ₂)
(fly A Apt ₂ Apt ₁)	(fly A Apt ₂ Apt ₁)	(fly A Apt ₂ Apt ₁)
(unload P ₃ A Apt ₁)	(unload P ₃ A Apt ₁)	(unload P ₃ A Apt ₁)
(unload P ₄ A Apt ₁)	(unload P ₄ A Apt ₁)	(unload P ₄ A Apt ₁)
(drive T ₁ L ₁ Apt ₁)	(drive T ₁ L ₁ Apt ₁)	(drive T ₁ L ₁ Apt ₁)
(load P ₄ T ₁ Apt ₁)	(load P ₄ T ₁ Apt ₁)	(load P ₄ T ₁ Apt ₁)
(load P ₃ T ₁ Apt ₁)	(load P ₃ T ₁ Apt ₁)	(load P ₃ T ₁ Apt ₁)
(unload P ₂ T ₁ Apt ₁)	(unload P ₂ T ₁ Apt ₁)	(unload P ₂ T ₁ Apt ₁)
(unload P ₁ T ₁ Apt ₁)	(unload P ₁ T ₁ Apt ₁)	(unload P ₁ T ₁ Apt ₁)
(drive T ₁ Apt ₁ L ₁)	(drive T ₁ Apt ₁ L ₁)	(drive T ₁ Apt ₁ L ₁)
(unload P ₄ T ₁ L ₁)	(unload P ₄ T ₁ L ₁)	(unload P ₄ T ₁ L ₁)
(unload P ₃ T ₁ L ₁)	(unload P ₃ T ₁ L ₁)	(unload P ₃ T ₁ L ₁)
π_a	π_b	π_c

Figure 2: Cost-optimal plans for the example task.

plans can be obtained rather quickly using structural symmetries (Shleyfman et al. 2015). Structural symmetries are permutations of variable values and actions that induce automorphisms of the state transition graph. Here, we present the definition of structural symmetries for SAS⁺ as was given by Sievers et al. (2017).

Definition 1 (structural symmetry) For a SAS⁺ planning task $\Pi = \langle \mathcal{V}, \mathcal{O}, s_0, s_* \rangle$, let F be the set of Π 's facts, i. e. pairs $\langle v, d \rangle$ with $v \in \mathcal{V}$, $d \in \text{dom}(v)$. A structural symmetry for Π is a permutation $\sigma : \mathcal{V} \cup F \cup \mathcal{O} \rightarrow \mathcal{V} \cup F \cup \mathcal{O}$, where:

1. $\sigma(\mathcal{V}) = \mathcal{V}$ and $\sigma(F) = F$ such that $\sigma(\langle v, d \rangle) = \langle v', d' \rangle$ implies $v' = \sigma(v)$;
2. $\sigma(\mathcal{O}) = \mathcal{O}$ such that for $o \in \mathcal{O}$, $\sigma(\text{pre}(o)) = \text{pre}(\sigma(o))$, $\sigma(\text{eff}(o)) = \text{eff}(\sigma(o))$, $\text{cost}(\sigma(o)) = \text{cost}(o)$;
3. $\sigma(s_*) = s_*$;

where $\sigma(\{x_1, \dots, x_n\}) := \{\sigma(x_1), \dots, \sigma(x_n)\}$, and $s' := \sigma(s)$ is the partial state obtained from the partial state s s.t. for all $v \in \text{vars}(s)$, $\sigma(\langle v, s[v] \rangle) = \langle v', d' \rangle$ implies $s'[v'] = d'$.

A structural symmetry σ stabilizes the state s if $\sigma(s) = s$. Given a plan $\pi = o_1 \dots o_n$ and a structural symmetry σ that stabilizes the initial state, applying the permutation σ to each action in the plan results in a necessarily valid plan $\sigma(\pi) = \sigma(o_1) \dots \sigma(o_n)$ of the same cost. Note that $\sigma(\pi)$ is not a reordering of π , since σ may map actions from π to actions outside of π .

In our example, the structural symmetries can detect symmetries between two of the trucks T₂ and T₃, between the two packages that are initially in L₁, and between the two packages that are initially in L₂. Thus, structural symmetries

can be used to obtain additional plans from a given plan, applying action permutations to that plan. In our example, the plan π_c in Figure 2 can be obtained from π_a using the symmetry between the trucks T₂ and T₃. Note that these two plans use different actions and thus are not reorderings of each other. The plan π_b , on the other hand, is a reordering of π_a , changing the order between the first two actions. These two plans are not symmetric, since mapping the action (load P₄ T₂ L₂) to (load P₃ T₂ L₂) would also require mapping (unload P₄ T₂ L₂) to (unload P₃ T₂ L₂). Naturally, there also exist pairs of plans that are both symmetric and reordering of each other. There are 6602112 cost-optimal plans in our example, half of them are reorderings of the plan π_a and the other half are reordering of π_c .

Lastly, the *top-k planning problem* (Sohrabi et al. 2016; Katz et al. 2018) is defined as follows.

Definition 2 (top-k planning problem) Given a planning task $\Pi = \langle \mathcal{V}, \mathcal{O}, s_0, s_* \rangle$ and a natural number k , find a set of plans $P \subseteq \mathcal{P}_\Pi$ such that:

- (i) for all plans $\pi \in P$, if there exists a plan π' for Π with $\text{cost}(\pi') < \text{cost}(\pi)$, then $\pi' \in P$, and
- (ii) $|P| \leq k$, with $|P| < k$ implying $P = \mathcal{P}_\Pi$.

An instance of the top-k planning problem $\langle \Pi, k \rangle$, is called solvable if $|P| = k$ and unsolvable if $|P| < k$.

The objective of top-k planning is finding k plans of lowest costs for a planning task Π and thus optimal planning is the special case of top-1 planning.

3 Top-quality Planning

We start by formally defining the top-quality planning problem as the problem of finding all plans of bounded quality.

Definition 3 (top-quality planning problem)

Given a planning task $\Pi = \langle \mathcal{V}, \mathcal{O}, s_0, s_* \rangle$ and a natural number q , find the set of plans $P = \{\pi \in \mathcal{P}_\Pi \mid \text{cost}(\pi) \leq q\}$.

The top-quality planning problem is well-defined and always has a solution. Note that one can exploit existing tools for top-k planning to derive solutions to the top-quality planning problem, by setting k to a large value and adding another stopping criteria, once a plan π of $\text{cost}(\pi) > q$ was obtained. In such cases, P would explicitly contain all plans with $\text{cost}(\pi) \leq q$. This was done by Vadlamudi and Kambhampati (2016) as the first step in their algorithm, although they do not formally define the top-quality problem. These explicit sets of plans can get prohibitively large. Further, some of the plans in that set, although different as sequences of actions, could be considered equivalent from the underlying application perspective. If, in addition, it would be possible to escape the need for generating all these equivalent plans, the performance of the planners could improve significantly. We thus formally define a computational problem that considers possible equivalence between plans.

Let N be some equivalence relation on the set of plans \mathcal{P}_Π . For a plan $\pi \in \mathcal{P}_\Pi$, by $N[\pi]$ we denote the equivalence class of π , which is a set of all plans that are equivalent to π under N . Slightly abusing the notation, for a set of plans P , by $N[P]$ we denote the union of the equivalence classes

$\bigcup_{\pi \in P} N[\pi]$. Using that equivalence relation, we can define the quotient top-quality problem as follows.

Definition 4 (quotient top-quality planning problem)

Given a planning task $\Pi = \langle \mathcal{V}, \mathcal{O}, s_0, s_* \rangle$, an equivalence relation N over its set of plans \mathcal{P}_Π , and a natural number q , find a set of plans $P \subseteq \mathcal{P}_\Pi$ such that $N[P]$ is the solution to the top-quality planning problem.

For equivalence relations that preserve plan cost the quotient top-quality planning problem always has a solution. Note that solutions to top-quality planning are solutions to the quotient top-quality planning under the identity equivalence relation. Further, while there is one possible solution to the top-quality planning problem, there can be many solutions to a quotient top-quality problem, defined by representatives of each equivalence class. Further, nothing in our definition prevents a solution from including more than one plan per equivalence class, the only restriction is that all equivalence classes have to be represented.

In this paper, we focus on one specific equivalence relation: two plans are equivalent if their action multi-sets are. Formally, we consider the equivalence relation

$$U_\Pi = \{(\pi, \pi') \mid \pi, \pi' \in \mathcal{P}_\Pi, \text{MS}(\pi) = \text{MS}(\pi')\}.$$

Thus, the main computational problem we consider in this paper is as follows.

Definition 5 (unordered top-quality planning problem)

Given a planning task $\Pi = \langle \mathcal{V}, \mathcal{O}, s_0, s_* \rangle$ and a natural number q , find a set of plans $P \subseteq \mathcal{P}_\Pi$ such that P is a solution to the quotient top-quality planning problem under the equivalence relation U_Π .

Note that while the solution to the top-quality planning problem can be obtained from a solution to the unordered top-quality planning problem, using a simple algorithm that generates all possible valid reordering for each plan in the solution, this is not the focus of current work. Focusing on the unordered top-quality planning problem allows us to generate reorderings of the same plan only if and when these reorderings are actually needed.

4 Computation of Top-quality Plans

In order to obtain a solver for the computational problem specified above, we take an approach similar to Katz et al. (2018), and iteratively generate plans using an existing cost-optimal planner, and construct planning tasks with a reduced set of plans, by forbidding exactly the plans found so far. In contrast to Katz et al. (2018), we forbid not only a specific plan, but also all its possible reorderings. In order to achieve that, we thus instead of forbidding plans as sequences of actions, forbid plans as multi-sets. To be able to do that, we need to come up with a reformulation of a planning task that forbids all plans with the exact number of appearances for each action. Similar reformulation was recently suggested by Katz and Sohrabi (2020) for diverse planning. The reformulation, which we refer to as FPMA for Forbidding a Plan as a Multi-set of Actions, can forbid a single multi-set, and thus for a set of plans, the union of their multi-sets was forbidden in each consecutive iteration. That way, possibly

additional plans were forbidden. For diverse planning, that did not pose a problem. In our case, however, we need to ensure that we forbid *exactly* the set of plans that were previously found. For that, in what follows, we adapt the FPMA reformulation accordingly.

Alternatively, the FPMA reformulation can be used directly, creating a sequence of planning tasks, similarly to the way it was done in top- k planning (Katz et al. 2018). This, however, poses two problems: the reformulated planning task size grows fast with each iteration, and, as in the iterative top- k planner, the mapping between the reformulated and original actions must be constantly maintained.

In this work, at each iteration we reformulate the original planning task to forbid all plans found so far. In this case, we do not need to maintain the mapping between the reformulated and original actions and keep the reformulated task size smaller. In the rest of this section we extend the definition of Katz and Sohrabi (2020) to a set of plans (as multi-sets), present an algorithm that exploits the adapted definition to derive top-quality solutions, and prove its soundness and completeness. We start by presenting a simplified variant of the original definition.

4.1 Forbidding a Plan as a Multi-set of Actions

Slightly simplifying the original FPMA reformulation, we present here the task reformulation that ignores orders between actions in a plan and thus forbids all possible reorderings of a given plan, as well as all sub-plans.

Definition 6 Let $\langle \mathcal{V}, \mathcal{O}, s_0, s_* \rangle$ be a planning task and π be a plan. The task $\Pi_\pi = \langle \mathcal{V}', \mathcal{O}', s'_0, s'_* \rangle$ is defined as follows.

- $\mathcal{V}' = \mathcal{V} \cup \{\bar{v}\} \cup \{\bar{v}_o \mid o \in \pi\}$, with \bar{v} being a binary variable, and $\text{dom}(\bar{v}_o) = \{0, \dots, m_o\}$, where m_o is the number of occurrences of o in π ,
- $\mathcal{O}' = \{o^e \mid o \in \mathcal{O} \setminus \pi\} \cup \bigcup_{i=0}^{m_o} \{o_i^f \mid o \in \pi\}$, where
 - $\text{pre}(o^e) = \text{pre}(o)$, $\text{eff}(o^e) = \text{eff}(o) \cup \{\{\bar{v}, 0\}\}$,
 - $\text{pre}(o_i^f) = \text{pre}(o) \cup \{\{\bar{v}_o, i\}\}$,
 - for $0 \leq i < m_o$, $\text{eff}(o_i^f) = \text{eff}(o) \cup \{\{\bar{v}_o, i+1\}\}$,
 - $\text{eff}(o_{m_o}^f) = \text{eff}(o) \cup \{\{\bar{v}, 0\}\}$, and
 - $\text{cost}'(o^e) = \text{cost}'(o_i^f) = \text{cost}(o)$, $0 \leq i \leq m_o$,
- $s'_0[v] = s_0[v]$ for all $v \in \mathcal{V}$, $s'_0[\bar{v}] = 1$, and $s'_0[\bar{v}_o] = 0$ for all $o \in \pi$, and
- $s'_*[v] = s_*[v]$ for all $v \in \mathcal{V}$ s.t. $s_*[v]$ defined, and $s'_*[\bar{v}] = 0$.

The semantics of the reformulation is as follows. The variable \bar{v} starts from the value 1 and switches to 0 when an action is applied that is not from plan π treated as a multi-set. Once a value 0 is reached indicating a deviation from plan π , it cannot be switched back to 1. The finite-domain variables \bar{v}_o encode the number of applications of the action o . The actions o_i^f are copies of the action o in π , counting the number of applications of o , as long as the number is not higher than the number of times it appears in π . Once the number of applications exceeds m_o , \bar{v} is set to 0.

4.2 Forbidding Multiple Plans Exactly

In order to forbid multiple plans, the greedy approach of Katz and Sohrabi (2020) forbids the super-set of these plans by taking a super-set of the multi-sets representing the plans. In our case, when optimality is required, we cannot follow the same approach. Instead, we present a reformulation that forbids exactly these plans and their sub-plans, and the possible reorderings. Our reformulation extends the one in Definition 6, by introducing a binary variable for each plan, encoding whether the plan was deviated from. We refer to the new reformulation as FMPMA (Forbidding Multiple Plans as a Multi-set of Actions).

Definition 7 Let $\langle \mathcal{V}, \mathcal{O}, s_0, s_\star \rangle$ be a planning task, P be a set of plans, and $\mathcal{O}_P = \{o \mid o \in \pi, \pi \in P\}$. The task $\Pi_P^- = \langle \mathcal{V}', \mathcal{O}', s'_0, s'_\star \rangle$ is defined as follows.

- $\mathcal{V}' = \mathcal{V} \cup \{\bar{v}_\pi \mid \pi \in P\} \cup \{\bar{v}_o \mid o \in \mathcal{O}_P\}$, with \bar{v}_π being binary variables, and $\text{dom}(\bar{v}_o) = \{0, \dots, m_o\}$, where $m_o = \max_{\pi \in P} \{m_o^\pi\}$ and m_o^π is the number of occurrences of o in π ,
- $\mathcal{O}' = \{o^e \mid o \in \mathcal{O} \setminus \mathcal{O}_P\} \cup \{o_i^f \mid o \in \mathcal{O}_P, 0 \leq i \leq m_o\}$, where

$$\begin{aligned} \text{pre}(o^e) &= \text{pre}(o), \text{eff}(o^e) = \text{eff}(o) \cup \{\langle \bar{v}_\pi, 0 \rangle \mid \pi \in P\}, \\ \text{pre}(o_i^f) &= \text{pre}(o) \cup \{\langle \bar{v}_o, i \rangle\}, \\ \text{eff}(o_i^f) &= \text{eff}(o) \cup \{\langle \bar{v}_o, i+1 \rangle\} \cup \{\langle \bar{v}_\pi, 0 \rangle \mid i = m_o^\pi\} \\ &\text{for } 0 \leq i < m_o, \\ \text{eff}(o_{m_o}^f) &= \text{eff}(o) \cup \{\langle \bar{v}_\pi, 0 \rangle \mid \pi \in P\}, \text{ and} \\ \text{cost}'(o^e) &= \text{cost}'(o_i^f) = \text{cost}(o), 0 \leq i \leq m_o, \end{aligned}$$
- $s'_0[v] = s_0[v]$ for all $v \in \mathcal{V}$, $s'_0[\bar{v}_\pi] = 1$ for all $\pi \in P$, and $s'_0[\bar{v}_o] = 0$ for all $o \in \mathcal{O}_P$, and
- $s'_\star[v] = s_\star[v]$ for all $v \in \mathcal{V}$ s.t. $s_\star[v]$ defined, and $s'_\star[\bar{v}_\pi] = 0$ for all $\pi \in P$.

4.3 Using the Reformulation

Algorithm 1 exploits the FMPMA reformulation in Definition 7 to find a solution to the unordered top-quality planning problem. The algorithm incrementally finds the set P of top quality plans. Starting with the empty set $P = \emptyset$ and assuming $\Pi_\emptyset^- = \Pi$, we use an optimal planner iteratively to find an optimal plan π to the planning task Π_P^- . Once a plan is found, it is added to the set of found plans P . Then, the new reformulation Π_P^- is constructed from Π for the next iteration. The algorithm stops when a plan π is generated such that $\text{cost}(\pi) > q$. Note that the algorithm results in a set P of sequential plans, with no two plans being reorderings of each other. Similarly to Katz et al. (2018), at each iteration, after the plan π was found, we use structural symmetries to generate from π additional plans that are symmetric (Shleyfman et al. 2015) to π , and add these that are not reorderings of π to the set P . Finally, since the first step results in an optimal plan, the quality can be defined relatively to the cost of the optimal plan rather than an absolute number.

Theorem 1 *Algorithm 1 is sound and complete for unordered top-quality planning when using cost-optimal planners that find shortest (in the number of actions) cost-optimal plans.*

Algorithm 1 Iterative unordered top-quality planning.

Input: Planning task Π , quality bound q
 $P \leftarrow \emptyset$, $\Pi' \leftarrow \Pi$, $\pi \leftarrow$ optimal plan to Π'
while $\text{cost}(\pi) \leq q$ **do**
 $P \leftarrow P \cup \{\pi\} \cup \{\pi' \mid \pi' \text{ is symmetric to } \pi, \pi' \notin U_\Pi[\pi]\}$
 $\Pi' \leftarrow \Pi_P^-$, where Π_P^- is the FMPMA reformulation
 $\pi \leftarrow$ optimal plan to Π'
end while
return P

Proof: Let P be the set of plans returned by Algorithm 1 and let π_f be the plan found when the algorithm breaks. Since π_f is an optimal plan to Π_P^- and $\text{cost}(\pi_f) > q$, we need to show that Π_P^- forbids exactly the plans in $U_\Pi[P]$. For a plan $\pi \in P$, Π_P^- has a variable \bar{v}_π that reaches its goal value only when the number of applications of some action exceeds the number of appearances of that action in π . Thus, π is not a plan for Π_P^- . Since FMPMA reformulation treats plans as multi-sets, this is true also for all $\pi' \in U_\Pi[\pi]$.

Let P_1, \dots, P_n denote the sets of plans at the beginning of each algorithm iteration and let $\pi_1, \dots, \pi_n = \pi_f$ be the optimal plans found by the algorithm in these iterations, with π_i being an optimal plan to $\Pi_{P_i}^-$. Let π be a plan for Π such that $\text{cost}(\pi) \leq q$. If $\pi \notin U_\Pi[P]$, there exists k such that π is a plan for $\Pi_{P_k}^-$, but not for $\Pi_{P_{k+1}}^-$. Let $P' = P_{k+1} \setminus P_k$ be the plans forbidden in $\Pi_{P_{k+1}}^-$ but not in $\Pi_{P_k}^-$. Then, there exists $\pi' \in P'$ such that $\text{MS}(\pi) \subseteq \text{MS}(\pi')$. If $\text{MS}(\pi) = \text{MS}(\pi')$, then $\pi \in P$ and we are done. Assume that $\text{MS}(\pi)$ is a proper subset of $\text{MS}(\pi')$. Note that π' is a reordering of a plan that is symmetric to π_k , which was the optimal plan found for $\Pi_{P_k}^-$. Assuming that our optimal planner finds shorter optimal plans before longer ones, a plan π for $\Pi_{P_k}^-$ would be found before π_k , contradicting the assumption that $\text{MS}(\pi)$ is a proper subset of $\text{MS}(\pi')$. \square

Zero-cost actions pose a challenge for top-quality planning, at times causing infinite solution size. In such cases, our algorithm will continue producing plans indefinitely.

5 Experimental Evaluation

To evaluate the feasibility of our suggested approach, we have implemented an unordered top-quality planner as part of the ForbidIterative planners collection (Katz, Sohrabi, and Udrea 2019), on top of the Fast Downward planning system (Helmert 2006). The experiments were performed on Intel(R) Xeon(R) CPU E7-8837 @2.67GHz machines, with the time and memory limit of 30min and 2GB, respectively. The benchmark set consists of all STRIPS benchmarks from optimal tracks of International Planning Competitions (IPC) 1998-2018, a total of 1797 tasks in 64 domains. Our baseline for the comparison is a simple approach, using a top-k planner with a large k value, 10^6 , stopping if a plan of quality above the bound was reached. While such large values of k consume significant disk space and can require additional read/write time, in our experiments we have seen several cases when 10^6 plans were produced. We use *NaiveS*, the

Coverage	$q_m = 1.00$		$q_m = 1.05$		$q_m = 1.10$		$q_m = 1.20$	
	K-tq	tq	K-tq	tq	K-tq	tq	K-tq	tq
airport	7	21	7	18	6	17	6	17
blocks	16	17	16	17	10	13	8	9
data-network18	0	1	0	0	0	0	0	0
depot	2	2	2	2	0	2	0	1
driverlog	5	9	5	9	1	7	1	4
floortile11	0	2	0	2	0	0	0	0
ged14	5	7	5	7	5	7	5	7
gripper	2	4	2	3	2	2	0	1
logistics00	3	16	3	13	1	10	0	5
logistics98	0	4	0	2	0	1	0	0
miconic	18	27	18	26	13	15	10	12
mprime	19	18	19	18	19	18	6	11
mystery	20	20	20	20	20	20	13	15
nomystery11	9	13	7	10	5	8	1	5
openstacks08	0	2	0	2	0	2	0	2
parcprinter08	6	15	5	12	5	12	5	11
parcprinter11	3	11	2	8	2	8	2	7
pegsol08	21	23	21	23	21	22	8	17
pegsol11	8	13	8	13	8	12	2	5
pipes-notank	7	11	7	11	4	7	1	4
pipes-tank	3	4	3	4	3	4	1	1
psr-small	37	46	26	40	22	36	16	24
rovers	3	6	3	6	2	4	0	3
satellite	3	5	3	5	1	1	1	1
storage	14	14	14	14	7	11	6	7
tetris14	1	2	1	2	1	2	0	1
tidybot11	5	7	2	4	1	3	1	1
tpp	4	6	4	5	3	5	2	5
transport08	6	7	1	1	1	1	0	0
transport14	0	1	0	0	0	0	0	0
trucks	1	2	1	2	0	1	0	0
visitall11	8	8	7	7	5	6	5	5
woodwork08	3	8	2	6	1	4	0	2
woodwork11	0	3	0	1	0	0	0	0
zenotravel	7	7	7	7	4	5	2	4
Sum other (669)	36	36	33	33	26	26	22	22
Sum all (1797)	282	398	254	353	199	292	124	209

Table 1: The coverage results comparing to top quality planning via top-k planning, for various quality bounds.

best performing configuration of the iterative top-k planner (Katz et al. 2018), that exploits both symmetries and plan reorderings. We refer to our baseline as K-tq. The purpose of setting k to a large number is to allow the top-k planner to exploit the entire 30min time interval. However, once 10^6 plans were produced within the time bound, we stop. In our experiments, 10^6 plans were produced for 211 tasks, out of which for 210 tasks all these plans were optimal. Setting a larger bound was not found practical, especially since reading and writing such large amounts of plans is time consuming by itself. For each task, the quality bound is computed using the cost of the first found optimal plan, multiplied by a constant². We experiment with four different quality bound multipliers: $q_m = 1.0$ (optimal plans only), 1.05, 1.1, and 1.2 of the optimal plan cost. We do not report results for larger quality bounds, where both approaches had low coverage. Note, q can be any natural number as mentioned in Definition 5.

²This is not an overhead, as at least one optimal planner run needs to be performed anyway.

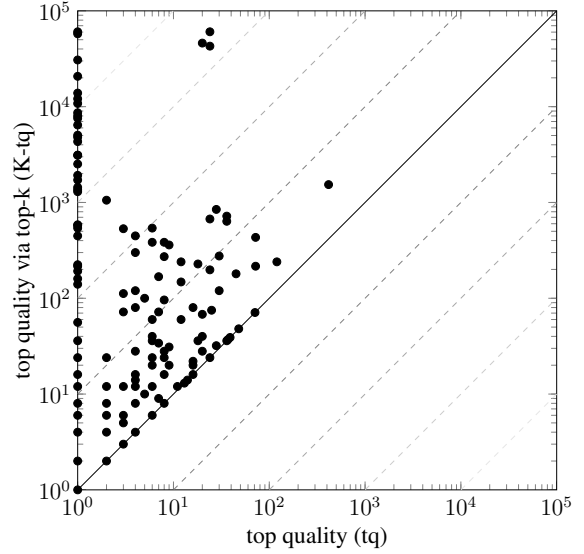


Figure 3: Per-task comparison of the solution encoding size.

Table 1 depicts per-domain coverage, comparing our technique, tq, to the baseline, K-tq, for four quality bound multipliers. Each task gets a score of 1 if and only if the planner proved there is no other plan within quality bound, by either finding a plan above the bound or proving there are no more plans. Note first that out of 64 domains, in 19 domains all optimal plans could not be found for any tasks, with any approach. There are 10 more domains where there is no difference in coverage between the baseline and our approach, for all tested quality bounds. These 29 domains are summarized in the *Sum other* row of Table 1. Out of the remaining 35 domains, the coverage gets worse only for one domain, MPRIME, by one task, for $q_m = 1.0, 1.05, 1.1$. This happens due to a timeout, and slightly increasing the time allocated eliminates the difference. For all these remaining 35 domains the coverage gets better (often significantly better) for at least one of the tested quality bounds. Extreme examples are AIRPORT, LOGISTICS00, and PSR-SMALL where the increase in coverage for some quality bounds is by 10 instances or more. In eight domains, the increase in coverage is by between 5 and 9 instances (24 cases overall). On the remaining 24 domains, the increase in coverage is more moderate, although still quite large. Overall, there is a clear benefit of the suggested approach over the baseline.

Another benefit of our approach is a compact representation of the solution. Figure 3 shows a per-task comparison of solution size (number of plans) for each of the approaches, for the quality bound multiplier $q_m = 1.0$, for tasks solved by both approaches. First, out of the total of 280 such tasks, there are 115 tasks on the diagonal. Out of the remaining 165 tasks (all above the diagonal), 115 tasks have a single optimal plan found by our approach, while the baseline needs to find multiple optimal plans, which are all reorderings of the same plan, with the maximal number of 60480 reorderings found. When the number of valid reordering is larger, the baseline approach fails before being able to find all optimal

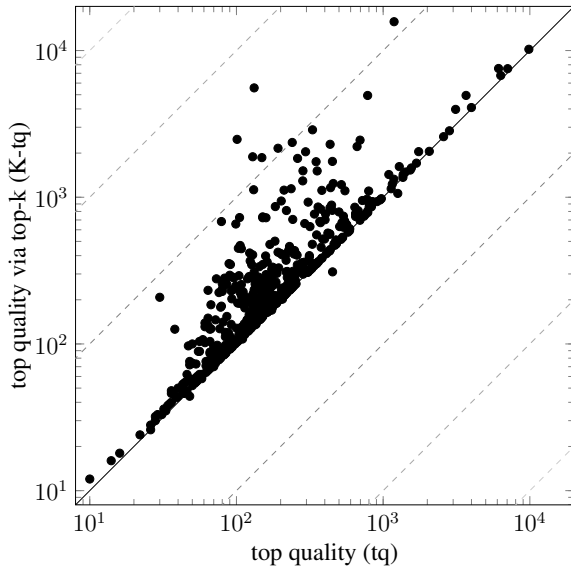


Figure 4: First reformulated task size (number of facts).

plans.

Additionally, Figure 4 compares the reformulated task size of our approach to the baseline one. We compare the first generated task reformulation, for tasks solved by both approaches, for the quality bound multiplier $q_m = 1.0$. The task size is measured here by the number of facts, i. e., variable value pairs. While the larger tasks are not necessarily harder for a classical planner, this is usually the case. Our experiments clearly show that our approach creates tasks of sizes significantly smaller than the baseline approach.

Finally, note that the proposed reformulation can also be exploited for top-quality planning, as in Definition 3, or a top-k planning, depending on the stopping criteria. To obtain either a top-quality or a top-k planner, a complete procedure for generating all valid reorderings of a plan is required. To experimentally test whether it can still pay off to use the simpler reformulation while using a complete procedure for generating reorderings of found plans, we have implemented such a procedure based on a depth-first search (DFS-r). Every time a plan is generated, DFS-r generates all its valid reorderings. The result is a planner that is based on the new suggested reformulation. It is worth emphasizing that the generation of all valid reordering must be complete, and thus DFS-r can take considerable time. While some optimization of the procedure is possible, it is outside the scope of our current work. To check both the top-quality and top-k planners, we forgo a stopping criteria beyond the aforementioned 10^6 plans and compared the number of plans generated within the time bound to the existing top-k planner. The results are depicted in Figure 5. Colors and shapes represent various domains, with less interesting (exhibit similar behavior for both approaches) domains marked with *other*. On one hand, the requirement of having a complete algorithm for generating all valid reorderings takes its toll in practice. For tasks on the horizontal axis, the algorithm could not finish gen-

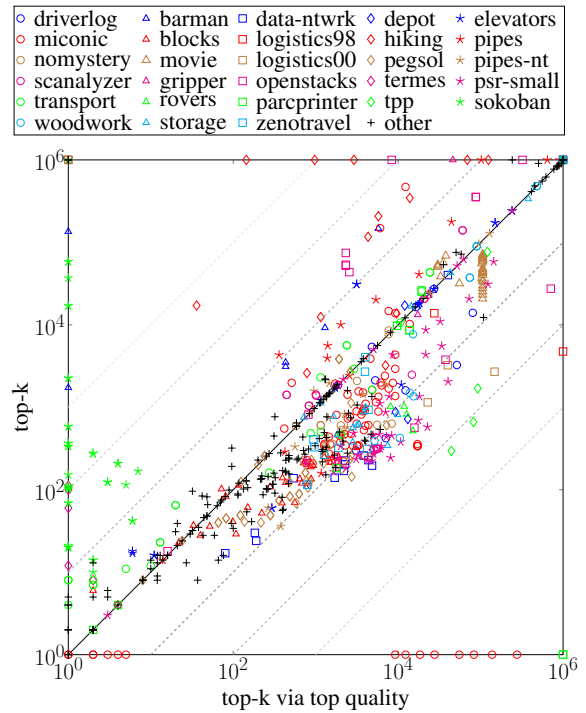


Figure 5: Comparison of the amount of produced plans.

erating all valid reorderings of the first found plan. Even if there are no other possible reorderings, the algorithm has to prove that, which might take considerable time. The overall picture, however, is in favor of the suggested approach, with most of the task fall under the diagonal.

6 Conclusions and Future Work

In this work we have shown a way of obtaining all plans of bounded solution quality, representing plan reorderings implicitly and thus escaping the need for counting plans. We have presented a novel reformulation of a planning task that forbids exactly the set of given plans, their reorderings, and all subplans thereof. We have formally defined the family of computational problems in top-quality planning and have implemented a first planner for unordered top-quality planning. The planner, exploiting the new reformulation, has empirically shown to perform significantly better than the straightforward approach of exploiting top- k planners with a large bound k , as it is often done in practice.

For future work, one promising direction is exploring the use of top-quality instead of top- k planners in planning applications. Another possible direction is creating a top- k planner based on the unordered top-quality planner, exploiting the more compact task representation. Further, (unordered) top-quality planners can be used to obtain solutions to diverse planning, when solution cost is also considered (Vadlamudi and Kambhampati 2016).

References

- Bäckström, C., and Nebel, B. 1995. Complexity results for SAS⁺ planning. *Computational Intelligence* 11(4):625–655.
- Boddy, M.; Gohde, J.; Haigh, T.; and Harp, S. 2005. Course of action generation for cyber security using classical planning. In Biundo, S.; Myers, K.; and Rajan, K., eds., *Proceedings of the Fifteenth International Conference on Automated Planning and Scheduling (ICAPS 2005)*, 12–21. AAAI Press.
- Bryce, D. 2014. Landmark-based plan distance measures for diverse planning. In Chien, S.; Fern, A.; Ruml, W.; and Do, M., eds., *Proceedings of the Twenty-Fourth International Conference on Automated Planning and Scheduling (ICAPS 2014)*, 56–64. AAAI Press.
- Chakraborti, T.; Fadnis, K. P.; Talamadupula, K.; Dholakia, M.; Srivastava, B.; Kephart, J. O.; and Bellamy, R. K. E. 2018. Visualizations for an explainable planning agent. In *Proceedings of the 27th International Joint Conference on Artificial Intelligence (IJCAI 2018)*, 5820–5822. IJCAI.
- Coman, A., and Muñoz-Avila, H. 2011. Generating diverse plans using quantitative and qualitative plan distance metrics. In Burgard, W., and Roth, D., eds., *Proceedings of the Twenty-Fifth AAAI Conference on Artificial Intelligence (AAAI 2011)*, 946–951. AAAI Press.
- Fox, M.; Gerevini, A.; Long, D.; and Serina, I. 2006. Plan stability: Replanning versus plan repair. In Long, D.; Smith, S. F.; Borrajo, D.; and McCluskey, L., eds., *Proceedings of the Sixteenth International Conference on Automated Planning and Scheduling (ICAPS 2006)*, 212–221. AAAI Press.
- Haslum, P. 2013. Heuristics for bounded-cost search. In Borrajo, D.; Kambhampati, S.; Oddi, A.; and Fratini, S., eds., *Proceedings of the Twenty-Third International Conference on Automated Planning and Scheduling (ICAPS 2013)*, 312–316. AAAI Press.
- Helmert, M. 2006. The Fast Downward planning system. *Journal of Artificial Intelligence Research* 26:191–246.
- Katz, M., and Sohrabi, S. 2020. Reshaping diverse planning. In *Proceedings of the Thirty-Fourth AAAI Conference on Artificial Intelligence (AAAI 2020)*. AAAI Press.
- Katz, M.; Sohrabi, S.; Udrea, O.; and Winterer, D. 2018. A novel iterative approach to top-k planning. In de Weerd, M.; Koenig, S.; Röger, G.; and Spaan, M., eds., *Proceedings of the Twenty-Eighth International Conference on Automated Planning and Scheduling (ICAPS 2018)*. AAAI Press.
- Katz, M.; Sohrabi, S.; and Udrea, O. 2019. ForbidIterative planners for top-k, top-quality, and diverse planning problems. <https://doi.org/10.5281/zenodo.3246773>.
- Kim, J.; Woicik, M. E.; Gombolay, M. C.; Son, S.; and Shah, J. A. 2018. Learning to infer final plans in human team planning. In *Proceedings of the 27th International Joint Conference on Artificial Intelligence (IJCAI 2018)*, 4771–4779. IJCAI.
- Nguyen, T. A.; Do, M. B.; Gerevini, A.; Serina, I.; Srivastava, B.; and Kambhampati, S. 2012. Generating diverse plans to handle unknown and partially known user preferences. *Artificial Intelligence* 190:1–31.
- Riabov, A. V.; Sohrabi, S.; Sow, D. M.; Turaga, D. S.; Udrea, O.; and Vu, L. H. 2015. Planning-based reasoning for automated large-scale data analysis. In Brafman, R.; Domshlak, C.; Haslum, P.; and Zilberstein, S., eds., *Proceedings of the Twenty-Fifth International Conference on Automated Planning and Scheduling (ICAPS 2015)*, 282–290. AAAI Press.
- Roberts, M.; Howe, A. E.; and Ray, I. 2014. Evaluating diversity in classical planning. In Chien, S.; Fern, A.; Ruml, W.; and Do, M., eds., *Proceedings of the Twenty-Fourth International Conference on Automated Planning and Scheduling (ICAPS 2014)*, 253–261. AAAI Press.
- Shleyfman, A.; Katz, M.; Helmert, M.; Sievers, S.; and Wehrle, M. 2015. Heuristics and symmetries in classical planning. In *Proceedings of the Twenty-Ninth AAAI Conference on Artificial Intelligence (AAAI 2015)*, 3371–3377. AAAI Press.
- Shvo, M.; Sohrabi, S.; and McIlraith, S. A. 2018. An AI planning-based approach to the multi-agent plan recognition problem. In Bagheri, E., and Cheung, J. C., eds., *Proceedings of the 31st Canadian Conference on Artificial Intelligence (CAI 2018)*, volume 10832, 253–258. Springer-Verlag.
- Sievers, S.; Wehrle, M.; Helmert, M.; and Katz, M. 2017. Strengthening canonical pattern databases with structural symmetries. In Fukunaga, A., and Kishimoto, A., eds., *Proceedings of the 10th Annual Symposium on Combinatorial Search (SoCS 2017)*, 91–99. AAAI Press.
- Sohrabi, S.; Riabov, A. V.; Udrea, O.; and Hassanzadeh, O. 2016. Finding diverse high-quality plans for hypothesis generation. In Kaminka, G. A.; Fox, M.; Bouquet, P.; Hüllermeier, E.; Dignum, V.; Dignum, F.; and van Harmelen, F., eds., *Proceedings of the 22nd European Conference on Artificial Intelligence (ECAI 2016)*, 1581–1582. IOS Press.
- Sohrabi, S.; Riabov, A. V.; Katz, M.; and Udrea, O. 2018. An AI planning solution to scenario generation for enterprise risk management. In *Proceedings of the Thirty-Second AAAI Conference on Artificial Intelligence (AAAI 2018)*, 160–167. AAAI Press.
- Sohrabi, S.; Riabov, A. V.; and Udrea, O. 2016. Plan recognition as planning revisited. In Kambhampati, S., ed., *Proceedings of the 25th International Joint Conference on Artificial Intelligence (IJCAI 2016)*, 3258–3264. AAAI Press.
- Stern, R.; Puzis, R.; and Felner, A. 2011. Potential search: A bounded-cost search algorithm. In Bacchus, F.; Domshlak, C.; Edelkamp, S.; and Helmert, M., eds., *Proceedings of the Twenty-First International Conference on Automated Planning and Scheduling (ICAPS 2011)*, 234–241. AAAI Press.
- Thayer, J. T., and Ruml, W. 2011. Bounded suboptimal search: A direct approach using inadmissible estimates. In Walsh, T., ed., *Proceedings of the 22nd International Joint Conference on Artificial Intelligence (IJCAI 2011)*, 674–679. AAAI Press.
- Vadlamudi, S. G., and Kambhampati, S. 2016. A combinatorial search perspective on diverse solution generation. In *Proceedings of the Thirtieth AAAI Conference on Artificial Intelligence (AAAI 2016)*, 776–783. AAAI Press.