

PHL342

①

BCS = "I tend to talk about footnotes"
Anthropomorphism -> cars' headlights
What does it mean for machines to have minds

"I don't know,
ask my
neighbor"

~ Nim Chimski ~

Bill Seager -> Princess to Descartes: how does $\psi \rightarrow \psi$

Descartes: good (best!) quest. it is a
'primitive' fact -

Descartes:
hydrodics of the
brain: fluid enlarges
cavals -> synaptic
weights

↳ pineal gland is not dual like
symmetry of brain -

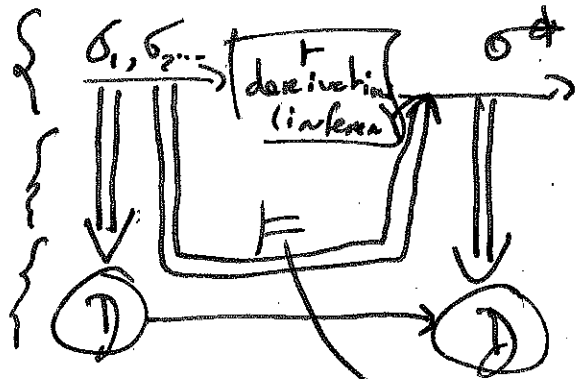
intentionality: to be about smthg

pb formula: $\mu\nu$

S syntactic domain


I semantic interpret.

D semantic domain



Skolen was saying that
since we can get models working in count. (vs) uncount
don. acting as repr. then human brain can go
beyond logic -

"I'm going to allow it"

Bill Seager: I love conceptual realism VAT
 "jar, tub" 

- original meaning (beyond formal semantics):
~~not a~~ ~~personal~~ multi apt selforganising map-

epigenetics formal symbol pushing cannot afford flexible repe
 LOTU: [^{productivity} systematicity (atomism Shdism)] introspection
 adaptive mechanisms

Weds 2:30 - 3:30 OH Bill Seager

e.g.

AI for chess playing:

prog is taking out bbs
 queen early, but no
 such subroutines:
 emergent effect?

Co pathen in consequences

- TUE → COG 401 - proposal
- THU → PHL 342 - essay
- FRI → PSY 270 - essay prop
- WED → COGS - neuroecon papers
- FRI → CSC 373 - assignment
- FRI → CSC 483 - catch up!
- THU → SAM - read proofs

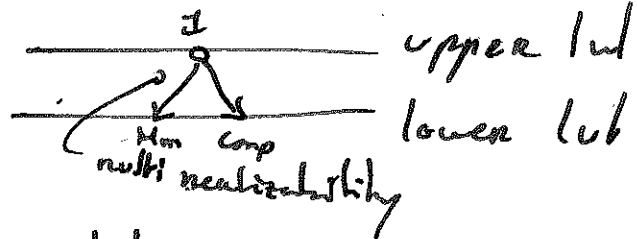
Bill Seager: in

e.g. PV = mRT



all parts can
 move in every
 direction (2nd law) but
 it is possible for them to go back: 2nd law is thus probabilistic -

vs scale



emerging
 modeling
 prop

modeling
 ↑
 emergence

soap bubble waits for
 corner ball

Gas thermodynamics:

1. can't win
2. can't break even
3. can't not play

~~Ministry~~ ~~and~~ ~~the~~ ~~the~~

Bill Seager:

infinite world (micro)
=> infinite precision
=> inf. computability

parallelism -> 2 worlds (Leibniz)

occasionalism -> god is responsible for cause -> effect

epistemic nominalism -> ?

idealism -> world is system of mental states

materialism -> opposite view

-> behaviorism: only behaviours 3.

introspection: system of concepts allowing formula of prop. attitude -

-> introspective conscious mental state is prop. attitude -

prop attitude ~~is~~ = mental state -> folk ψ

folk ψ can predict beh well, but not ~~prop~~ mental. accurate

empirical: child before 4 folk psy is not learned:

o belief = sweets -> rocks, kid: there's rocks, parent cares what do you think parent believes kid: rocks.

o desire = same: kid thinks parent wants teddy bear instead of book

=> after 4, folk ψ ^{becomes} learned and kids can now predict beh more accurately -

unexpressible thoughts like sensory exp -> atmospheres
Conscious

LOTH is a formal language

Fodor: Chomsky's arg => LOTH

Morpheme -> smallest unit of meaning

For games: trivial or futile ~~is~~ ^{time to win.} if everyone plays correctly, draw -

Frege
→ sense and
reference

Original meaning pb (by Daugeland): interpreted automatic formal system.

Frege -> have to add sense: Fred bel. P.M. in Asia

analytic truth: bachelors aren't married / P.M. = S.H. ~~is~~ Fred's KB
synthetic truth: X is a bachelor / so substitution cannot be done without

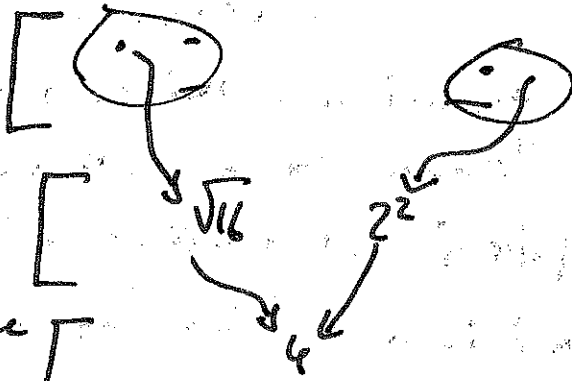
→ conceptual colonization?

ontology
core of KB
(vs fringe)
periphery

Realm of symbols

meanings

reference



nonexistent objects ~~do not~~ subsist in meaning (not reference)

Chinese Room (Searle)

vs Turing Test

→ No original intention (strong AI) but derived intentionality (weak AI)

→ multiple realizability of automatic formal sys breaks down -> only central systems can

afford causal props neces. for emergence of original intentionality.

Searle didn't actually prove that the room doesn't understand

like biological neurons