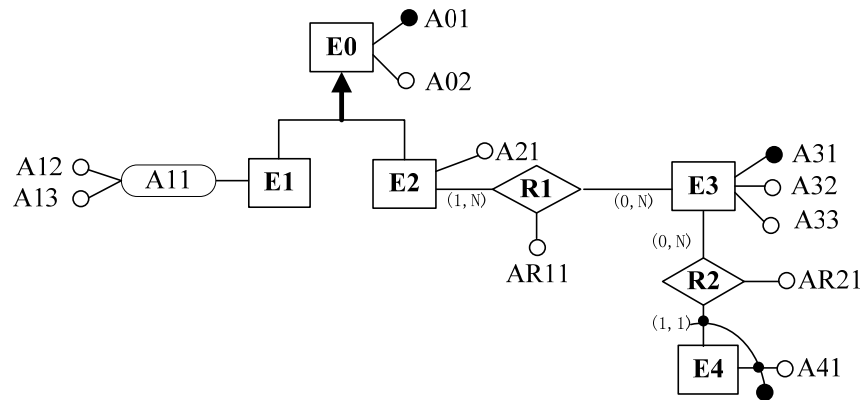


Exercise 1: ER to Relational Schema

Convert follow ER schema to a relational schema, using the rules you learned in the class (the cardinality constrains with both the maximum and minimum numbers being 1 are omitted for clarity).



Exercise 2: ER to Relational Schema

Translate the following E-R schema into a relational schema. For each relation indicate the key and, for each attribute, specify if null values can occur (supposing that the attributes of the E-R schema do not admit null values)

