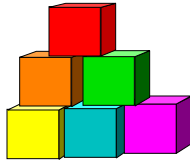


XXIII. Website Design

- The Web
- Hypertext Data Independence
- Data Models for Hypertext Documents
- The Araneus Data Model (ADM)
- The Navigational Conceptual Model (NCM)
- The Araneus Methodology for Website Design



© 2001 Paolo Atzeni

Web Design -- 1

The Web

- The spread of the World-Wide Web (hereafter “Web”) technology is one of the most remarkable phenomena of the last few years in all areas of computing and communication technologies.
- The Web (e.g., Web browsers) is becoming a standard interface for the general public to access and exchange information:
 - ✓ The protocol is very simple and public;
 - ✓ The interface is uniform;
 - ✓ The content is extremely rich (both in breadth and in depth);
- The Web is becoming a standard interface for accessing many services, specifically information systems and databases of every type.

© 2001 Paolo Atzeni

Web Design -- 2

Web Features and Open Problems

- The Web is a simple and powerful data integration tool.
- Two basic approaches to Web-based data integration:
 - ✓ Coarse-grain: pages of hypertext;
 - ✓ Fine-grain: unified interface for accessing different (usually similar) information systems available on the Web.
- The Web is built out of semi-structured (HTML/XML) documents, databases contain structured (i.e., tuple/record) data.
- Databases can be queried in a flexible way; hypertext documents are easy to access, but cannot be “queried”.
- Web sites are often difficult to explore, use and monitor.
- Web sites are also difficult to design and maintain.

© 2001 Paolo Atzeni

Web Design -- 3

Problems with Large Websites

- Information is often poorly organized and difficult to access.
- It is often unclear what information is available on a given website.
- The access structure of many websites is casual and idiosyncratic, causing frequent dangling references.
- The style of presentation is often heterogeneous.
- Large websites are usually difficult to update, or change their structure.
- It is also difficult to change the presentation structure and/or details.

© 2001 Paolo Atzeni

Web Design -- 4

Data Independence for Hypertext Documents

- You might say that there are three facets to the Web:
 - ✓ **Data** -- what information is offered through the site and what are the conceptual details and the logical organization.
 - ✓ **Hypertext** -- how data is arranged in pages and what navigation links correlate them.
 - ✓ **Presentation** -- the appearance of each piece of information on each pages.
- As much as possible, we'd like to decouple the three, so that changes to one affect minimally the other two facets of the Web.

© 2001 Paolo Atzeni

Web Design -- 5

An Example



© 2001 Paolo Atzeni

Web Design -- 6

Information Systems Analysis and Design CSC340


ADM (Araneus Data Model): A Logical Model for Hypertext Documents

- Developed at the University of Rome III (Universita di Roma Tre) by Paolo Atzeni, Paolo Merialdo, Giansalvatore Mecca and colleagues.
- Its features include:
 - ✓ Page schemas
 - ✓ Simple attributes
 - ✓ text, images, ...
 - ✓ link (anchor, URL)
 - ✓ Complex attributes such as lists, possibly nested.
 - ✓ A heterogeneous union operation.
 - ✓ Forms as virtual lists over form fields and links to a result.

© 2001 Paolo Atzeni Web Design -- 13

Information Systems Analysis and Design CSC340

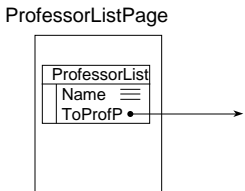
Another Web Page -- Containing a List of Links



© 2001 Paolo Atzeni Web Design -- 14

Information Systems Analysis and Design CSC340

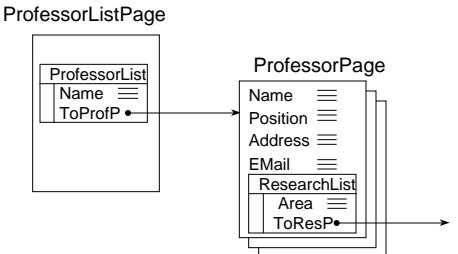
A Page Schema for ProfessorListPage



© 2001 Paolo Atzeni Web Design -- 15

Information Systems Analysis and Design CSC340


An ADM Schema



© 2001 Paolo Atzeni Web Design -- 16

Information Systems Analysis and Design CSC340

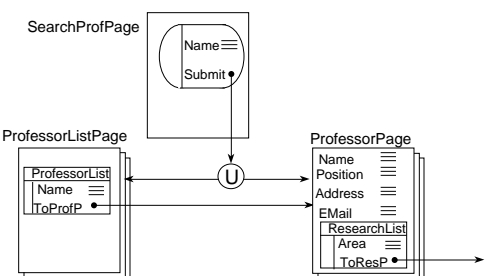
Heterogeneous Union and Forms



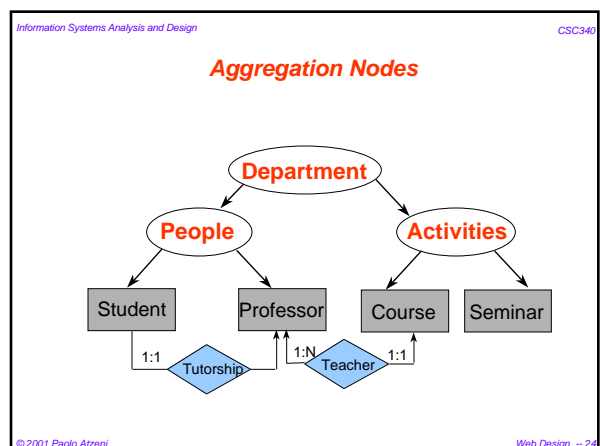
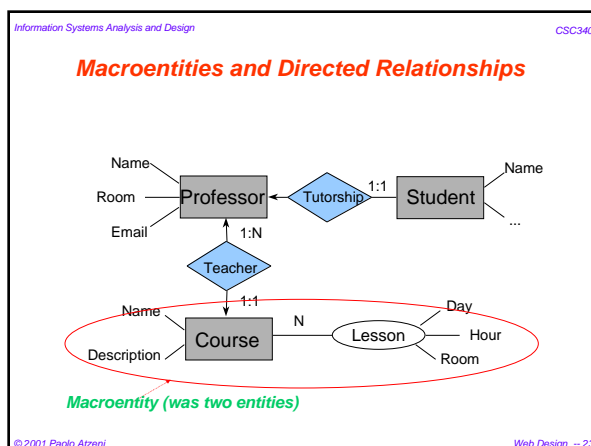
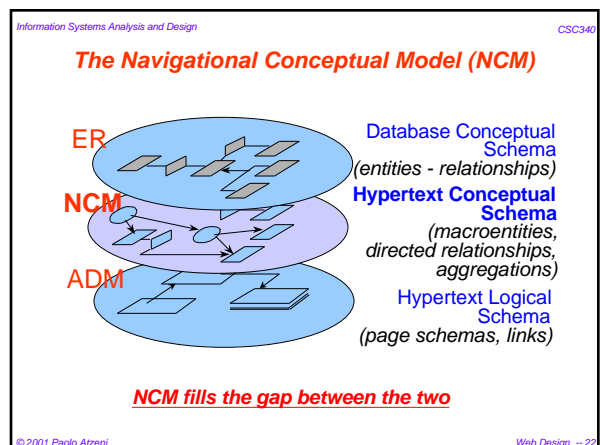
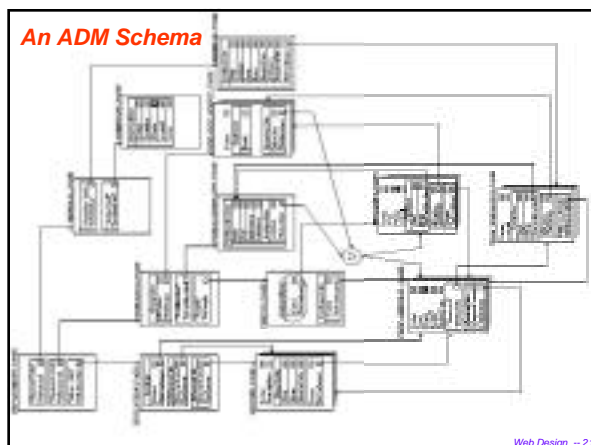
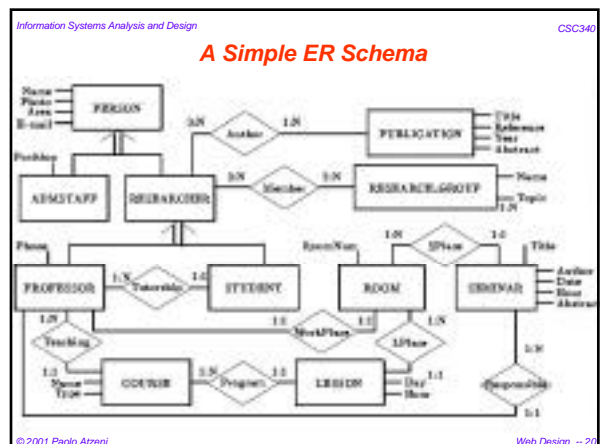
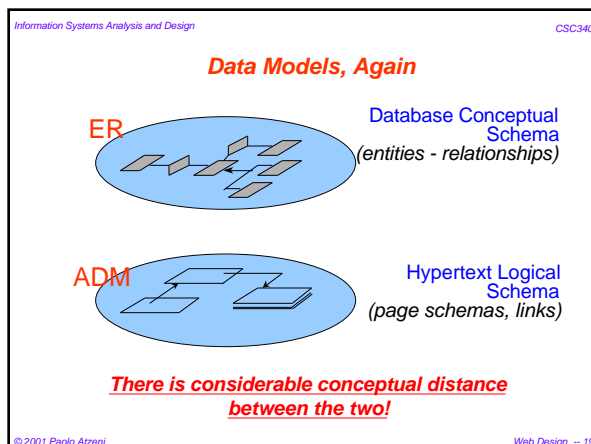
© 2001 Paolo Atzeni Web Design -- 17

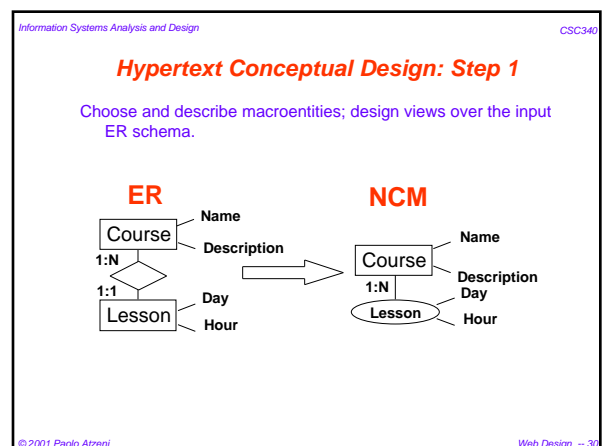
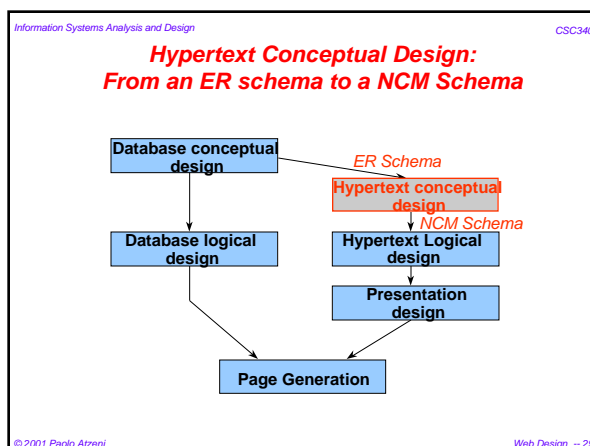
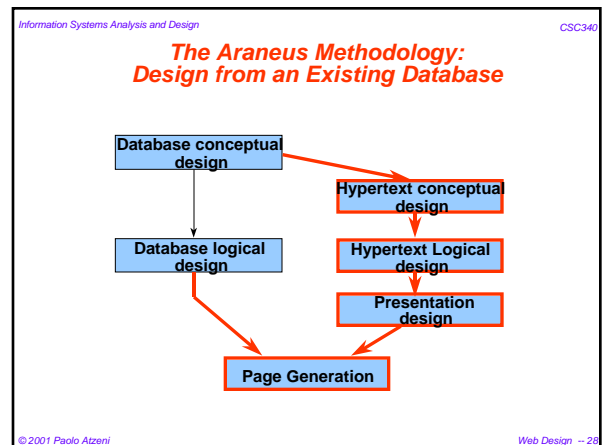
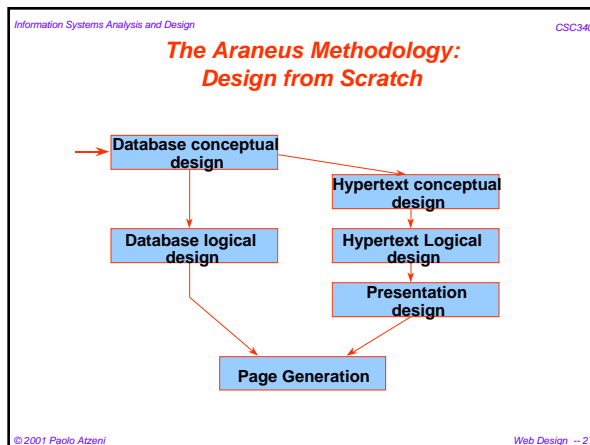
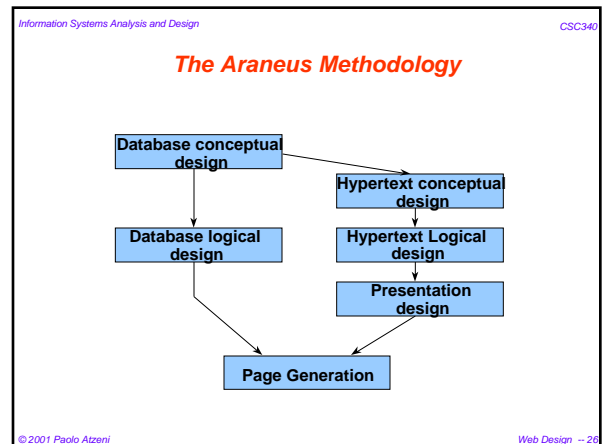
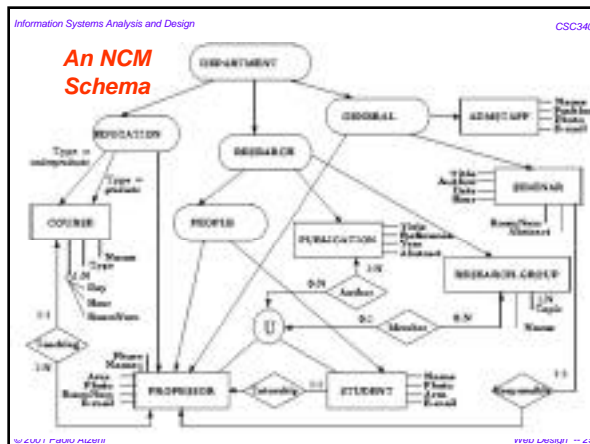
Information Systems Analysis and Design CSC340

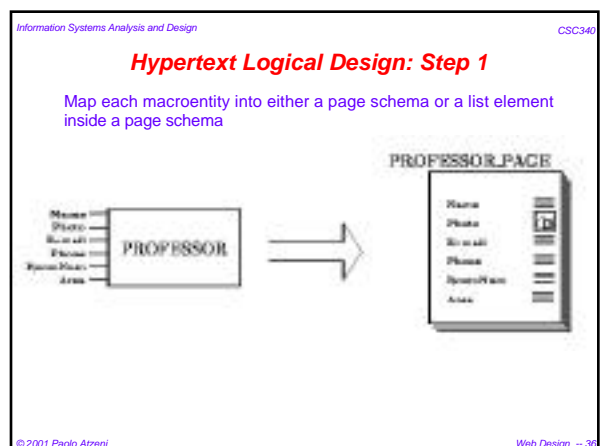
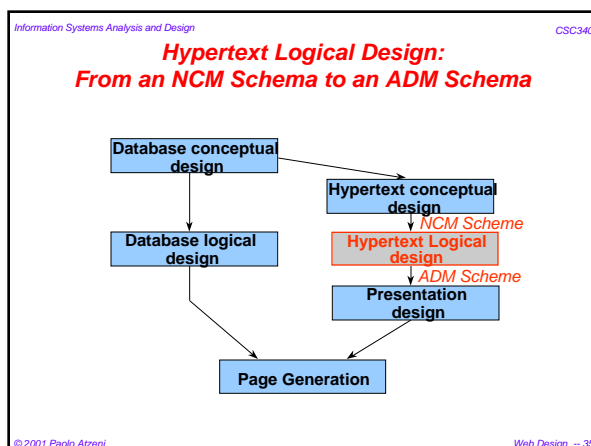
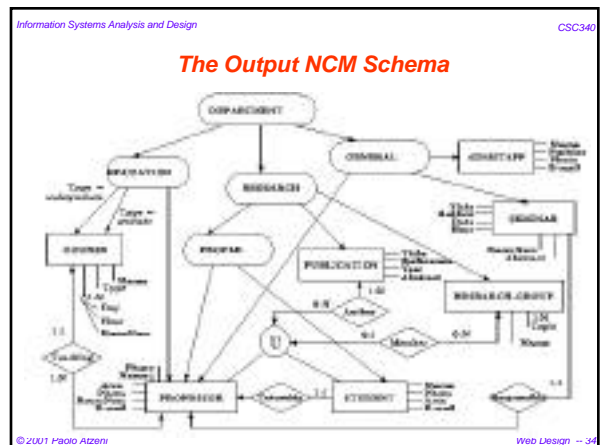
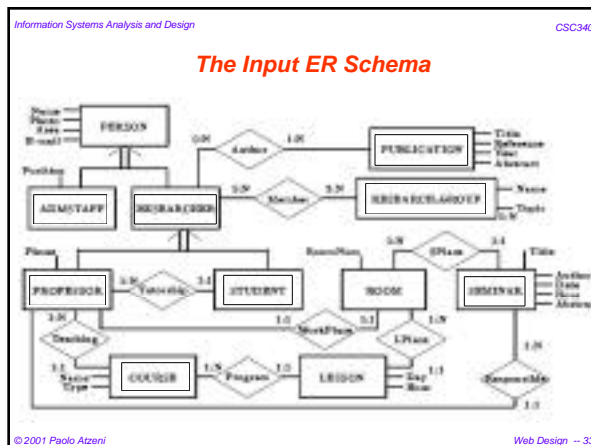
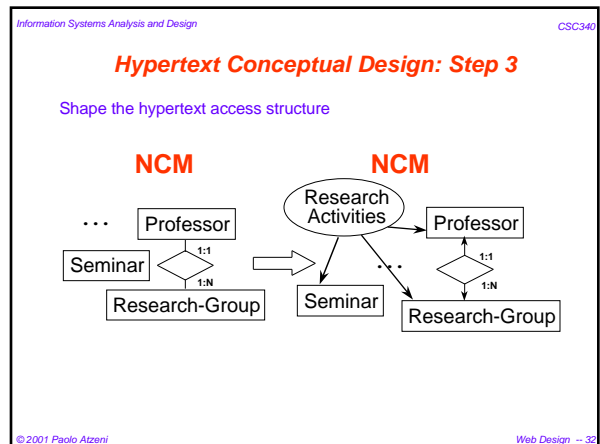
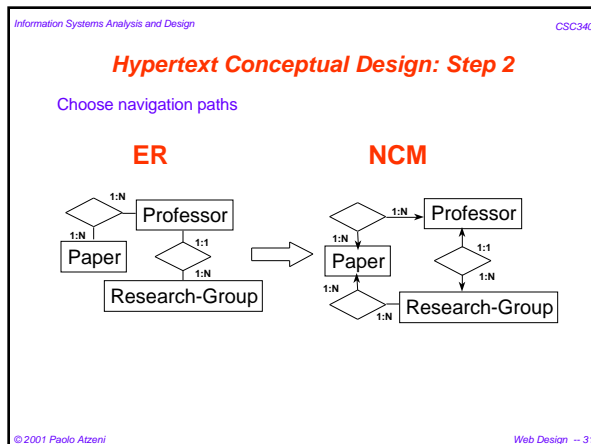
Heterogeneous Union and Forms

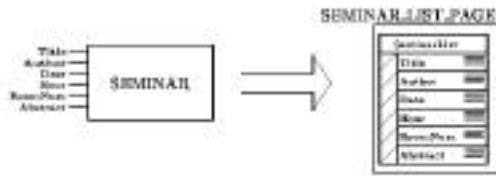


© 2001 Paolo Atzeni Web Design -- 18

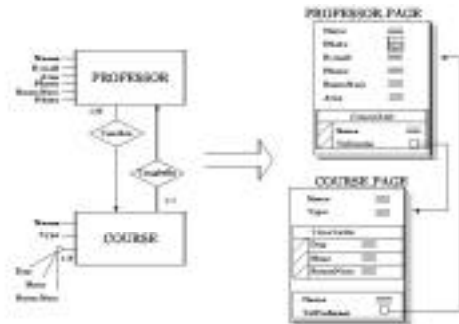




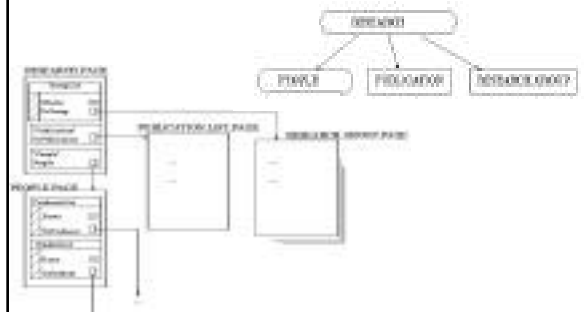


Another Example for Step 1**Hypertext Logical Design: Step 2**

Map each directed relationship into a (list of) link attribute(s)

**Hypertext Logical Design: Step 3**

Map each aggregation into a unique page schema with link attributes to the target page schemas

**Resulting ADM Schema ...Sideways...**