

CSC401/2511 Report of grades 2013

The 2013 class had 54 undergraduates (up from 33 in 2012) and 5 graduates (down from 18 in 2012). Three individuals dropped the course (some appeared to, but did not do so officially). The 2013 class did not significantly differ from the 2012 class on any of the assignments or on the final.

No graduate student selected the project option this term.

These data do not include alterations to grades after 18 April 2013 (including granted late submissions of assignments). *This is not an official document.*

Assignments

Assignment means and standard deviations are summarized over all undergraduates and graduates in the table below. No distinction is made between undergraduate and graduates here.

Table 1 Means (and standard deviations) for each of the three assignments.

Assignment 1	Assignment 2	Assignment 3
89.4% ($\sigma = 10.1$)	79.9% ($\sigma = 13.4$)	67.6% ($\sigma = 14.9$)

We compare the 2013 class to the 2012 class.

1. There is no statistical difference between classes on assignment 1 (heteroscedastic two-tailed $t(98) = 1.44, p = 0.15, CI = [-1.17, 7.43]$. The 2012 average was 80.16%
2. There is no statistical difference between classes on assignment 2 (heteroscedastic two-tailed $t(95) = 0.21, p = 0.83, CI = [-4.96, 6.13]$. The 2012 average was 80.49%.
3. There is no statistical difference between classes on assignment 3 (heteroscedastic two-tailed $t(85) = 0.66, p = 0.51, CI = [-4.56, 9.05]$. The 2012 average was 65.47%.

Histograms of the distribution of marks follow.

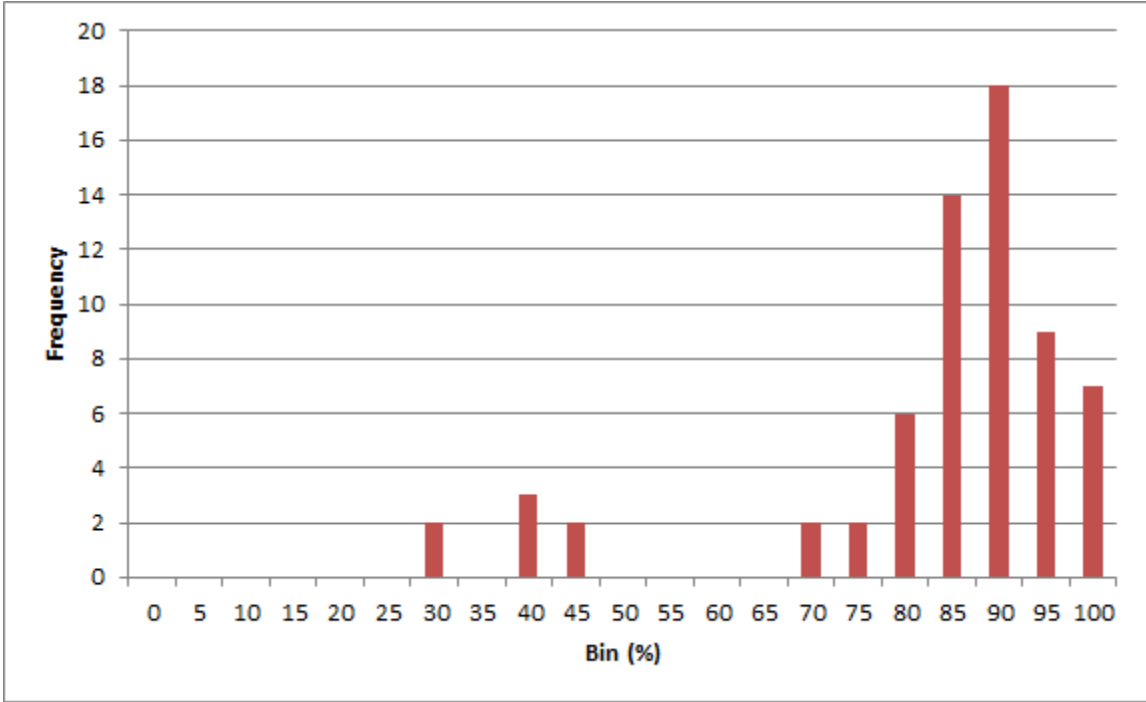


Figure 1 A1: Distribution of marks (%).

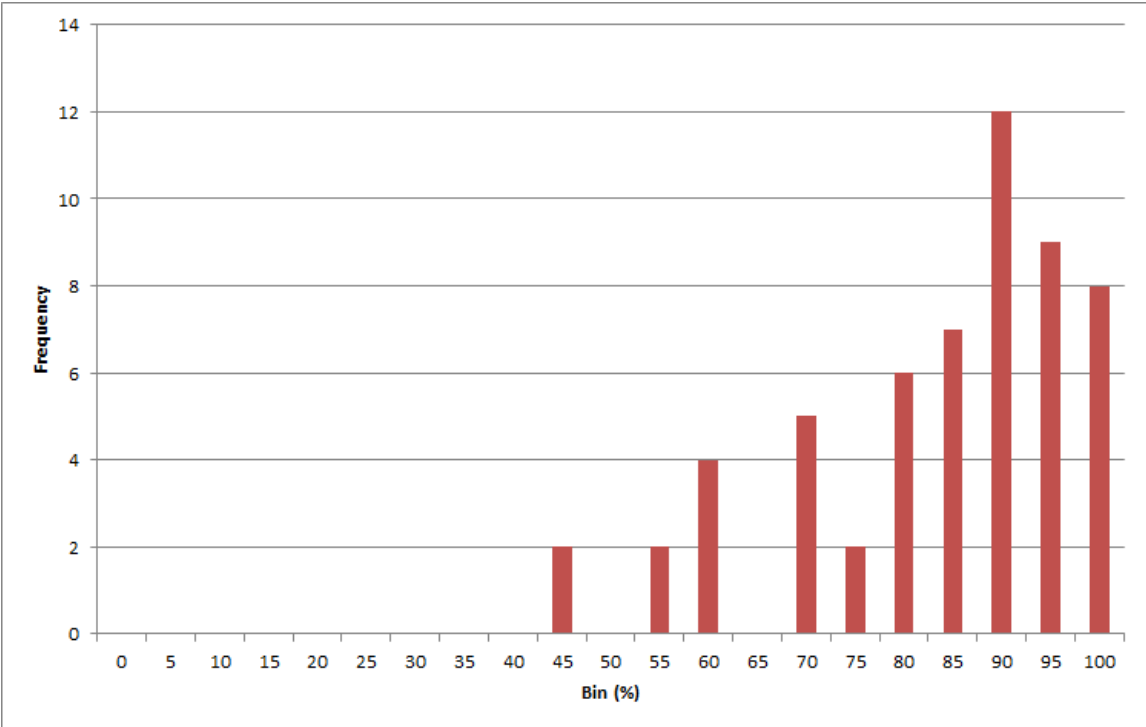


Figure 2 A2: Distribution of marks (%).

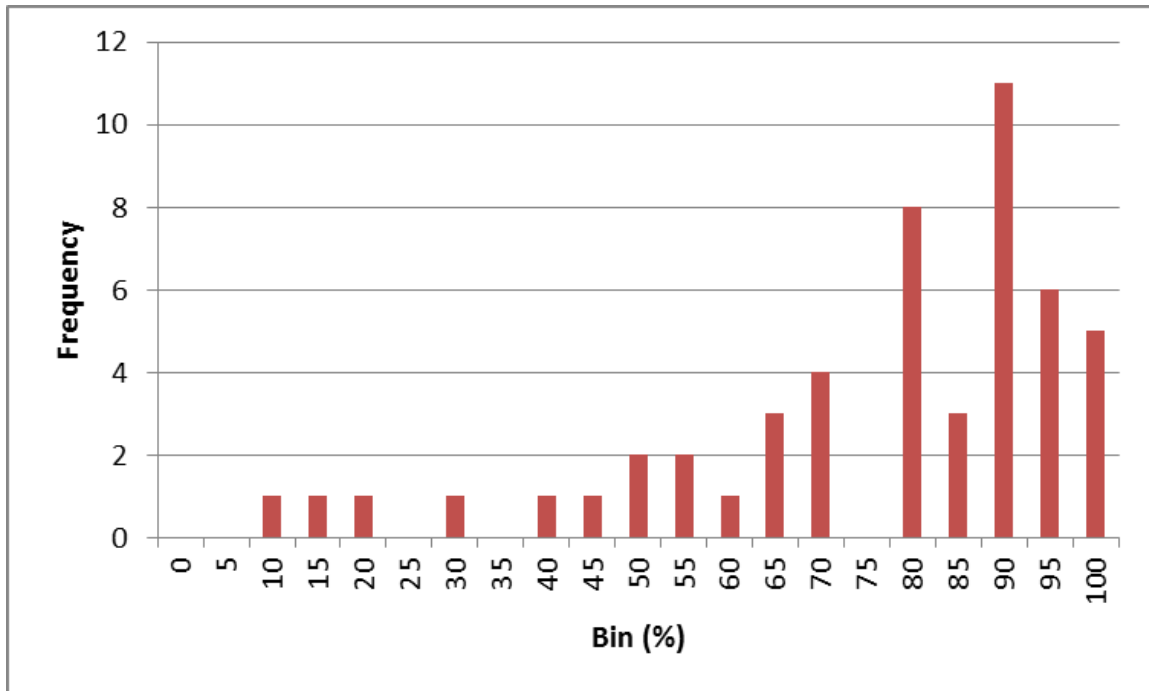


Figure 3 A3: Distribution of marks (%).

Final

The breakdowns per section are shown in the table below

Table 2 Average (and standard deviation) of marks for each of the 5 sections of the exam, across both undergraduates and graduates.

	MC	SA	HMM	SMT	ASR	Total
Undergrad	26.6 (5.0)	22.1 (5.7)	6.5 (2.8)	6.7 (3.4)	5.9 (2.5)	67.7 (15.1)
Grad	34.0 (2.0)	28.0 (1.4)	9.6 (0.9)	9.0 (0.7)	7.4 (1.5)	88.0 (5.6)
Out of	40	30	10	10	10	100

Undergraduate final exam marks ranged from 17 to 93. Graduate marks ranged from 81 to 95. Histograms for marks on the final are shown below.

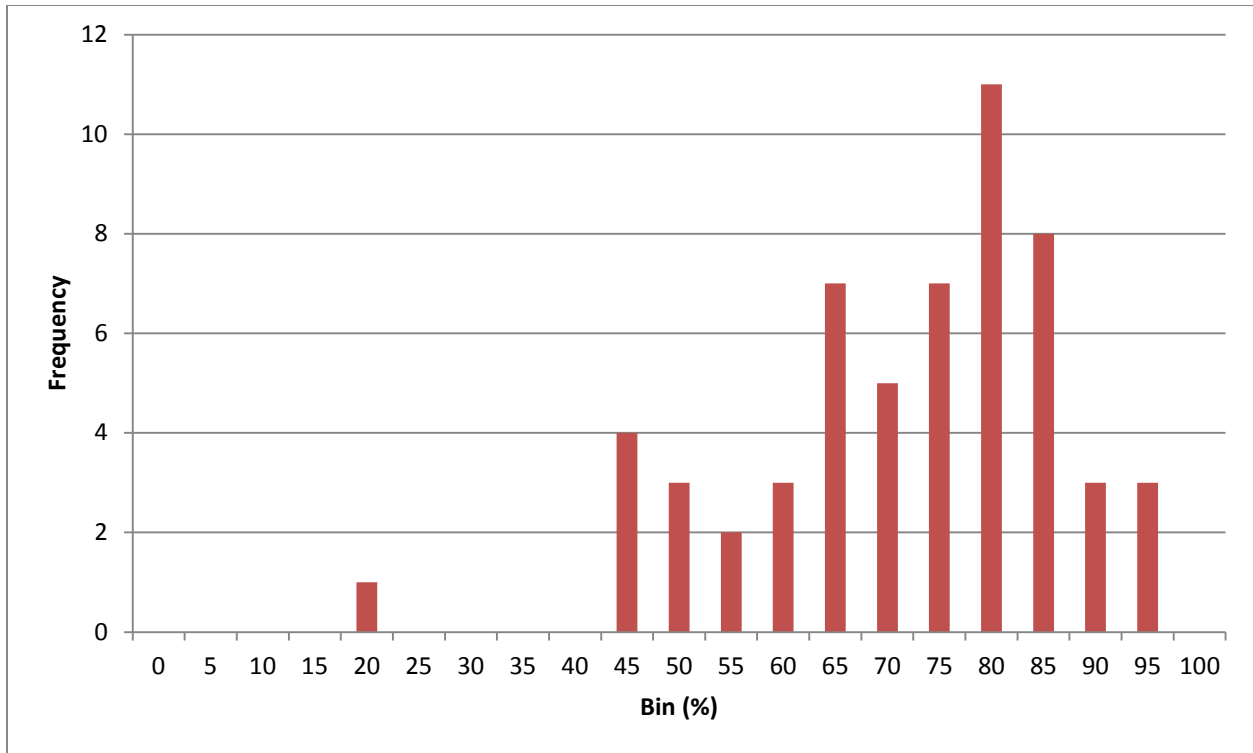


Figure 4 Distribution of final marks.

The average overall grade among undergraduates was 73.3% ($\sigma = 15.5$). The average overall grade among graduates was 92.6% ($\sigma = 4.6$).

The grade breakdown is:

	Undergrads	Grads
A	23	5
B	13	0
C	7	0
D	8	0
F	3	0