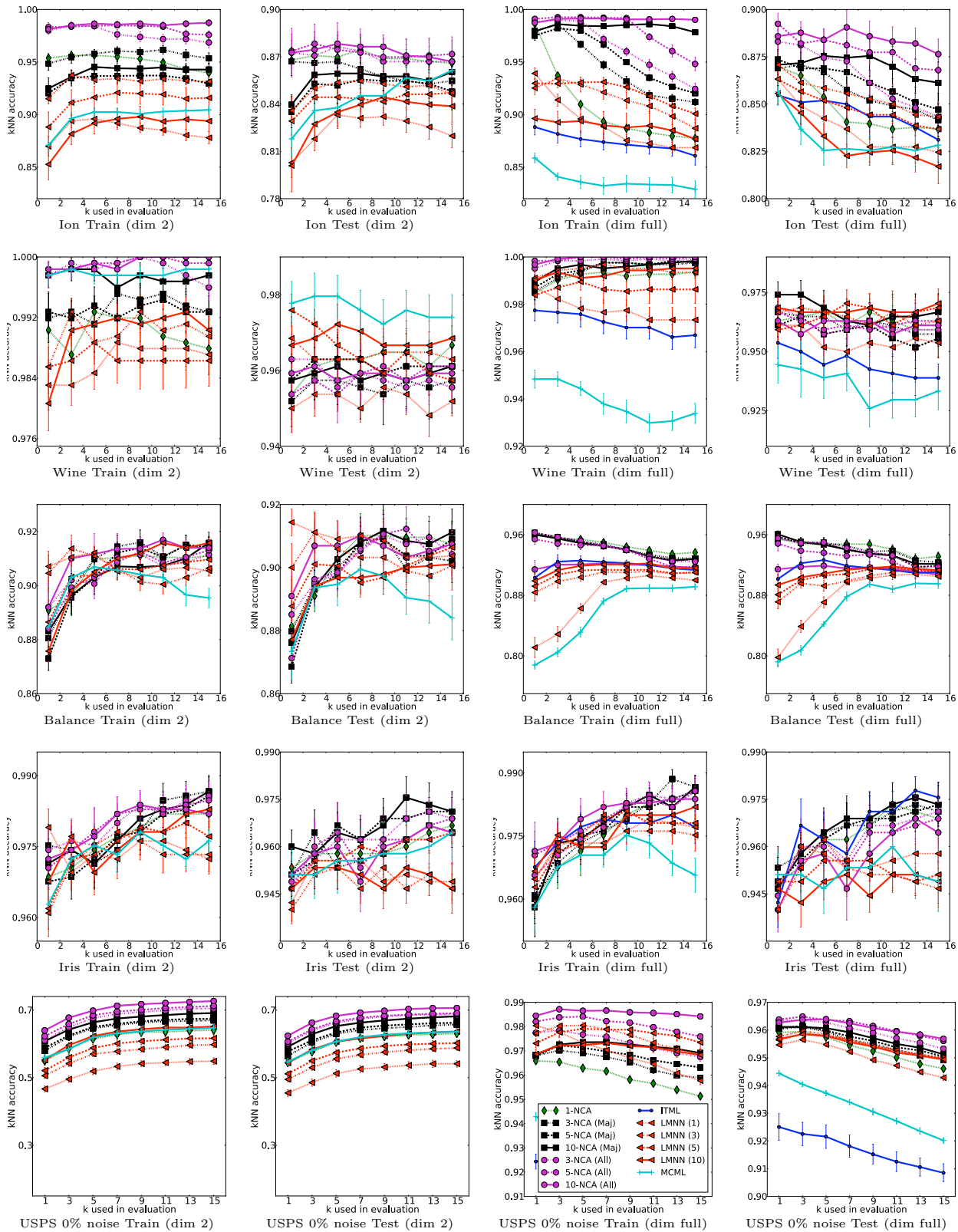


**Supplementary Materials for  
“Stochastic  $k$ -Neighborhood Selection  
for Supervised and Unsupervised  
Learning”**

Daniel Tarlow, Kevin Swersky, Laurent Charlin, Ilya Sutskever, and Richard S. Zemel

On the following pages we provide the full quantitative results comparing kNCA to NCA, LMNN, MCML, and (when applicable) ITML on 7 datasets (4 UCI, plus USPS with 3 noise levels).

# Stochastic $k$ -Neighborhood Selection



# Stochastic $k$ -Neighborhood Selection

