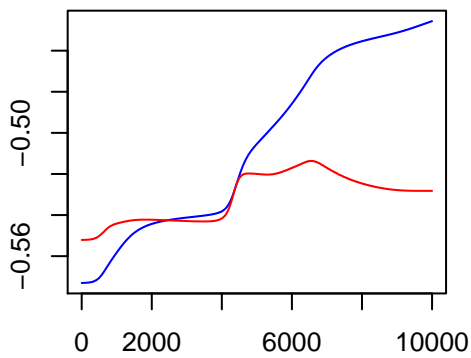
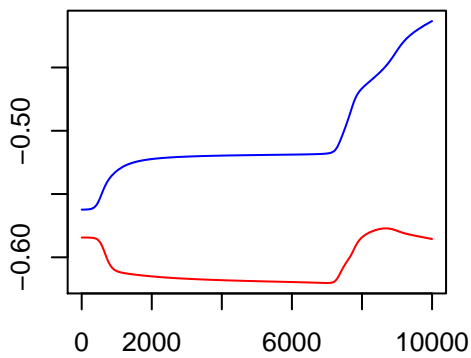


average log prob (blue:estimation, red:validation) iteration, best at 6550 = -0.5137

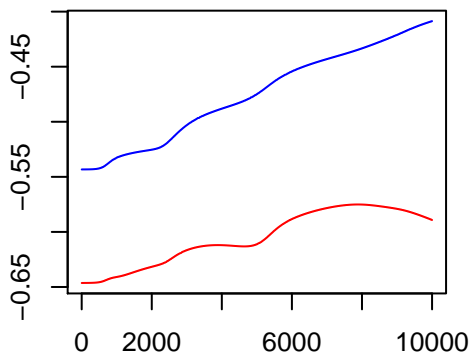


iteration, best at 6550 = -0.5137



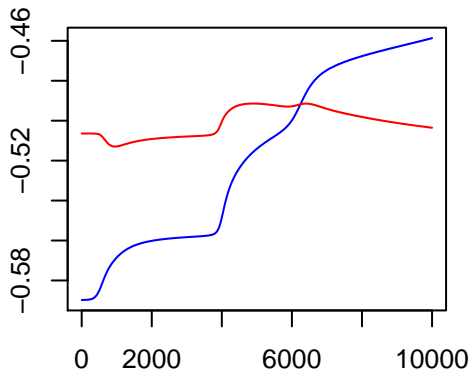
iteration, best at 8681 = -0.5771

average log prob (blue:estimation, red:validation) iteration, best at 7883 = -0.5751



iteration, best at 7883 = -0.5751

average log prob (blue:estimation, red:validation) iteration, best at 4894 = -0.4914



iteration, best at 4894 = -0.4914