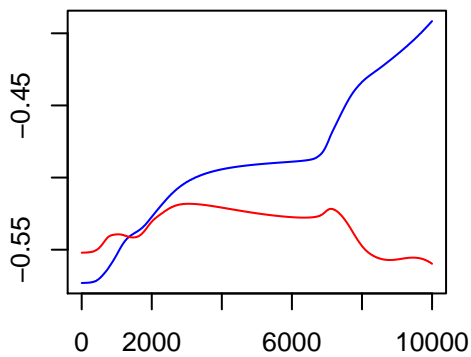
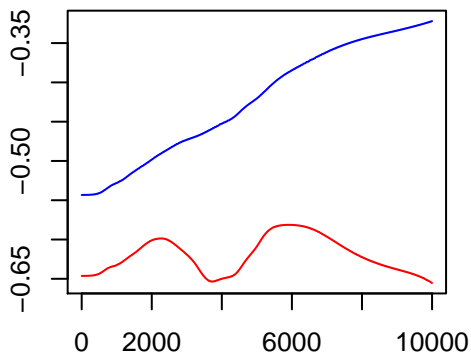


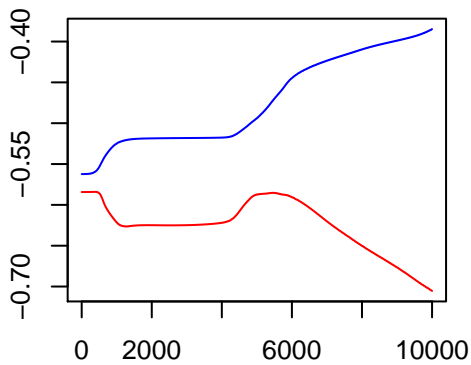
average log prob (blue:estimation, red:validation)



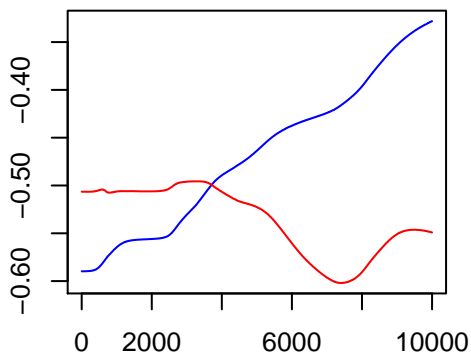
iteration, best at 3055 = -0.5182



iteration, best at 5910 = -0.5813



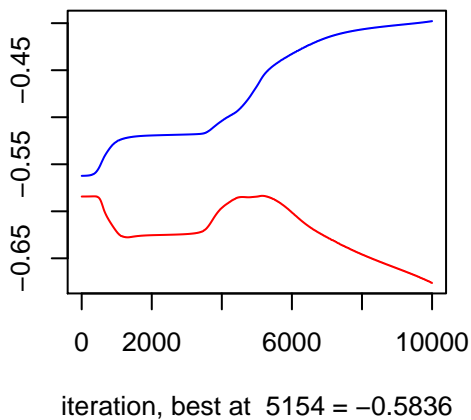
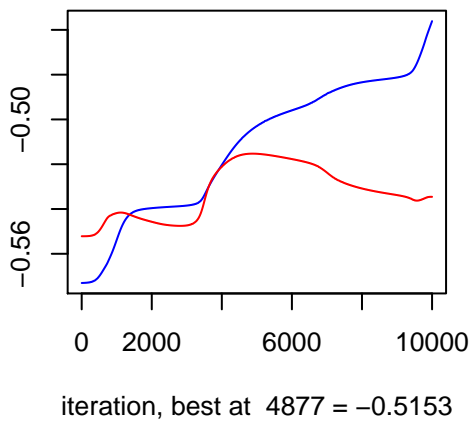
iteration, best at 372 = -0.5841



iteration, best at 3325 = -0.4956

average log prob (blue:estimation, red:validation)

average log prob (blue:estimation, red:validation)



average log prob (blue:estimation, red:validation)

